



WHAT DOES THE FUTURE OF CONSTRUCTION LOOK LIKE IN A SUSTAINABLE WORLD?

GATES LAYING THE FOUNDATION
FOR A GREENER TOMORROW.



FOUNDATION OF THE FUTURE

As the world becomes increasingly conscious of climate change, machine manufacturers and construction companies are looking for suppliers that incorporate sustainability into their equipment from the very beginning, for a future-proof foundation that’s built-to-last and better for the environment.

At Gates, we remain committed to eco-driven innovation as we push the boundaries of materials science to engineer lighter, more sustainable products that advance the way the world moves, and the communities in which we operate.

We aspire to align our sustainability advancements with the global efforts highlighted by the United Nations Sustainable Development Goals, meeting political demand and Government regulation on emission reduction, so you and your customers can focus on building better.



CLEAN WATER AND SANITATION
We adhere to important regulations and standards for water conservation, monitoring water withdrawal and water recycling.



AFFORDABLE AND CLEAN ENERGY
We have implemented a number of energy conservation programmes to enhance the efficiency of our operations and our customers’ applications.



CLIMATE ACTION
We are committed to responsible business practices and global energy efficiency program actions to combat climate change and align to science-based targets.



LIFE BELOW WATER
Gates recognises that water is a precious natural resource and will continue to identify processes across our organization to help reduce water withdrawal and improve water recycling.



LIFE ON LAND
We track the generation, location, and disposal methods of waste throughout all our facilities worldwide, with the aim to increase our waste diversion from landfills year-over-year.

AN EXPERT INSIGHT INTO THE PAST, PRESENT, AND FUTURE OF CONSTRUCTION



Gates has a rich history, pioneering the forefront of innovation and material science evolution. As the future of construction continues to advance, Gates is utilising its research and development expertise to help customers navigate within the world of construction and build a much cleaner, greener industry which is sustainable for the future.

Sam Mudge, Director of Sales, Industrial Highway, EMEA, is responsible for the Development of Sales into the original equipment manufacturer (OEM) First Fit sector and specialises in developing Fluid Power and Power Transmission solutions to meet the needs of manufacturers and end users. Sam describes Gates' biggest achievements that relate specifically to parts supplied to the construction industry, are strongly linked to continuous innovation without ever compromising on quality.

Sam believes that "continued investment in product technology, pushing the boundaries of materials science and helping customers meet ever-changing needs" is what sets Gates apart from its competitors. He goes on to say that this investment also extends to a commitment of production within region, offering localised service expertise to advance Gates' 'in region, for region' philosophy, ensuring that dedicated engineers are on hand to meet service expectations and drive customer partnerships to solve the construction industry's biggest problems, whenever they may arise.

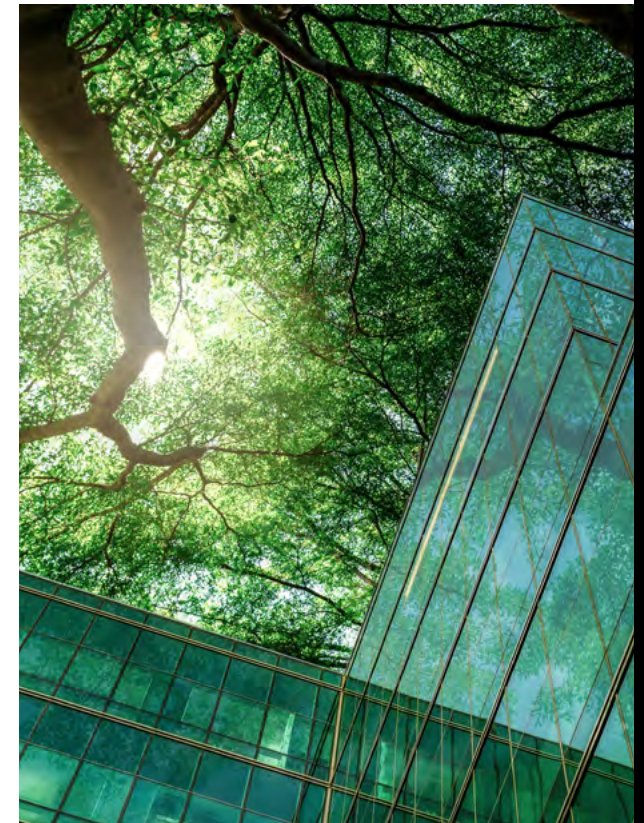
“

Gates continually innovates in both our Fluid Power and Power Transmission product ranges. Laser focused on improving what our customers consistently tell us is causing them their biggest challenges – we have been able to reduce complexity, size and weight, lower force-to-bend requirements and improve our production processes – all of which help our customers do what they do best, designing and manufacturing world class machines. Achieving the desired performance in smaller, more agile machinery with complete peace of mind that their machines will handle any application that is thrown at them.

SAM MUDGE

Director of Sales, Industrial Highway

”



BUILDING A SUSTAINABLE FUTURE

There is an increasing focus on the energy revolution for Electric and Hydrogen solutions across many construction industry platforms. This is helping to drive a cleaner, greener future with less impact on the environment, as well as “facilitating a rapid increase in Industrial Internet of Things (IIOT) capabilities for machines – supporting preventative maintenance, efficient energy usage, precision movements and many other aspects.”

The construction industry has rapidly advanced since its inception and is set to further develop new digitisation techniques to address the everchanging requirements of this dynamic and fast-paced market.

“What was historically a relatively conservative market is fully embracing new technology” says Sam. “More and more of the construction industry is becoming digitised, with Building Information Modelling (BIM) being the start.” This highly collaborative process for creating and managing information on a construction project throughout its whole life cycle “flows through every aspect of buildings themselves and the entire process of building, materials, and equipment, offering rapid design capability, with increased scrutiny on efficiency and energy consumption.”

The advancement of technology also extends not just through system processes, but to improve on and off-site machines. “Machines are becoming more compact but maintaining performance, allowing them to access challenging areas in cities and urban locations otherwise inaccessible. Technology is moving rapidly to Electric and Hydrogen Fuel Cell to ensure zero emissions in densely populated areas. All of this is helping to support a much cleaner, greener industry which is sustainable for the future.”

Now is the time to act, advises development expert Sam Mudge: “Early engagement with Hydraulic and Power Transmission solution providers such as Gates is integral to new equipment designs. Too often the routing of Hydraulic solutions is an afterthought which can throw up substantial challenges later in the design cycle and launch phase. Early discussions on technical capability and possibility allows better solutions to be created.”

Gates has a range of tailored solutions readily available, with a number of exciting innovations in the pipeline to aid energy transition from ICE to EV or Fuel Cell. Ensure all your future models are design optimised from the start and get in touch with a Gates expert today, for a more advanced tomorrow.

THE FOUR FUNDAMENTALS WITHIN OUR FOUNDATION



INNOVATIVE

Pioneering materials science since 1911

Engineering ground-breaking belts and hoses

Exceeding industry standards



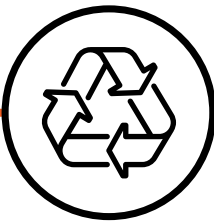
DURABLE

Unparalleled premium OE quality

Extended product lifetimes and long-lasting performance

Lower total cost of ownership

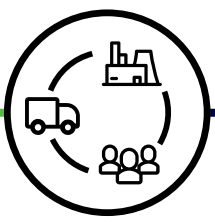
Withstand toughest conditions



SUSTAINABLE

Helping you meet your emission targets

Monitor water withdrawal measures



AGILE

Strong in-region manufacturing and testing

Guaranteed supply continuity

Tailored expertise and service

One-stop solution and warranty



These fundamentals are what makes Gates such a strong foundation within the industry, having laid the groundwork with years of reputable expertise and a rich heritage within this dynamic and fast-moving field. With a global presence that reaches every construction cornerstone, Gates operates a localised in-region service that puts customers, and their needs, first – providing a holistic solution and one-stop warranty service.

Whatever you and your customers are building, Gates is with you from the ground up. Our extensive product portfolio offers tailored solutions to perfectly match your market and requirements.

INTRODUCING OUR LATEST PRODUCT RANGE

At Gates, we continually innovate to construct next generation products that are built for purpose. Using premium OE quality materials, we build true performance and longevity into every application.

MULTI MASTER™ GMV™ MEGAFLEX™ FOR SUCTION AND DISCHARGE APPLICATIONS

- **Multi-use, multiple benefits** – One hose engineered for four industrial applications: fuel, hydraulic return, coolant, and water
- **Superior performance** – High tensile reinforcement and steel wire helix provides maximum resistance to air, water, petroleum, and lubricating oils
- **Industry leading flexibility** – Lightweight easy handling and retains a kink-resistant, robust structure for high-pressure operations
- **Easy installation** – Solves complex routings through tight spaces using less hose
- **Flame resistant cover** – MSHA approved for critical applications
- **Advanced materials science** – Premium quality with Gates as the original equipment manufacturer makes it adaptable for mini excavators, as well as reducing carbon footprint with lower shipping mitigation.

MEGASYST™ MXG™ 5K HYDRAULIC HOSE WITH XTRATUFF™ PLUS COVER MAKES MULTI-TASKING EASIER FOR A VARIETY OF APPLICATIONS

- **Cutting-edge performance** – Engineered to maximise uptime and boost productivity
- **Patented materials science** – Built with Xpiral™ woven spiral technology, exceeding industry performance standards for longevity of operation
- **Superior ozone protection** – XtraTuff Plus cover for 25x more abrasion resistance
- **Robust and rigorously tested** – Qualified to surpass one million impulse cycles
- **Lightweight formula** – 20% less weight for easier handling and installation, lowering overall emissions in the final product
- **Flexible and compact** – Lower force-to-bend for more ergonomic installation
- **High pressure performance** – 350 bar / 5075 psi working pressure.

MXT HYDRAULIC HOSE OFFERS A DIVERSIFIED APPLICATION THAT PROMOTES CONSOLIDATED INVENTORY

- **Versatile handling** – Lightweight, stronger hold
- **Increased flexibility** – Lower force-to-bend for faster installation
- **High performance** – Tested to 3x industry standard impulse criteria
- **Universally applicable** – Designed to meet evolving challenges
- **Fully fitted** – Compatible with MegaCrimp™ Couplings and Gates Crimpers
- **Superior ozone protection** – XtraTuff cover for increased abrasion and ozone resistance.

MICRO-V MULTI-RIBBED V-BELTS AND TENSIONERS ARE IDEAL FOR A SMOOTH APPLICATION WITH HIGH-SPEED PRECISION ACCURACY

- **High performance** – Designed to cover range of versatile applications
- **Extreme flexibility** – For reduced heat build-up and improved rib crack resistance
- **Superior resistance** – High oil and heat resistance with protection
- **Strong durability** – Enhanced load-carrying capacity for longer life and resistance to fatigue and shock loading
- **Balance built in** – Improved belt stability and performance on back idlers.



LIGHTER PRODUCTS, LARGER RESULTS



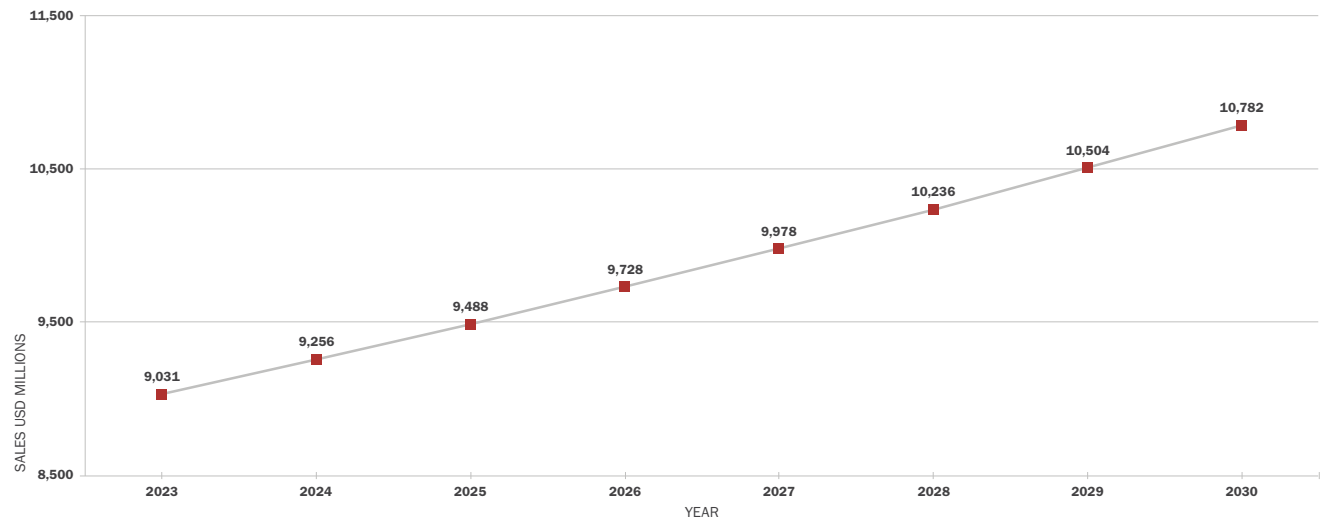
As experts within construction, Gates has been constantly evolving its products and services in alignment with the industry’s fast-moving direction. As ‘green construction’ becomes a permanent and ever more critical directive globally, we have been engineering our products to converge with customers CO2 emissions targets.

By applying Outer Diameter (OD) reductions we can construct smaller, lighter hoses, whilst being able to maintain pressure and performance for an improved bend radius. This enables the use of smaller machines to navigate through challenging routes for higher efficiency and productivity.

The transition from heavy duty equipment to smaller machines is evident in recent global trend trajectories. For example, the mini excavator’s market is booming with the value in USD due to increase 13.6% between 2025- 2030 and estimations for electrified components in mini excavators forecast to be worth over \$1 billion by 2030.

GLOBAL MINI EXCAVATOR MARKET

Gates is driven by innovation and has been engineering smaller, lighter, belt and hose solutions that are fully compatible with the growing demand for mini excavators.



DURABILITY, BUILT-IN

When your customers are building big, you need the right construction machinery products to provide long-lasting performance – whatever the weather, whatever the workload. With Gates, you get durability built in. This means each of our products are specially manufactured to withstand the toughest conditions, guaranteeing an extended product lifetime, and driving down overall total cost of ownership with less maintenance and less downtime.



LONGER LIFETIME, LESS IMPACTFUL

This longer lasting durability helps reduce product waste without the need for replacement, whilst cutting emissions and minimising impact on the environment.

With Gates' range of premium quality products, construction equipment manufacturers can also avoid testing equipment failures and unplanned downtime to maximise productivity.

MULTI MASTER GMV MEGAFLEX

High tensile reinforcement and steel wire helix provides maximum oil resistance and superior performance, every time.

MEGASYS MXG 5K HYDRUALIC HOSE WITH XTRATUFF PLUS COVER

Sealed with XtraTuff Plus cover offering 25x more abrasion resistance for superior ozone protection.

MXT HYDRAULIC HOSE

Tested to 3x industry standard impulse criteria for the toughest jobs.

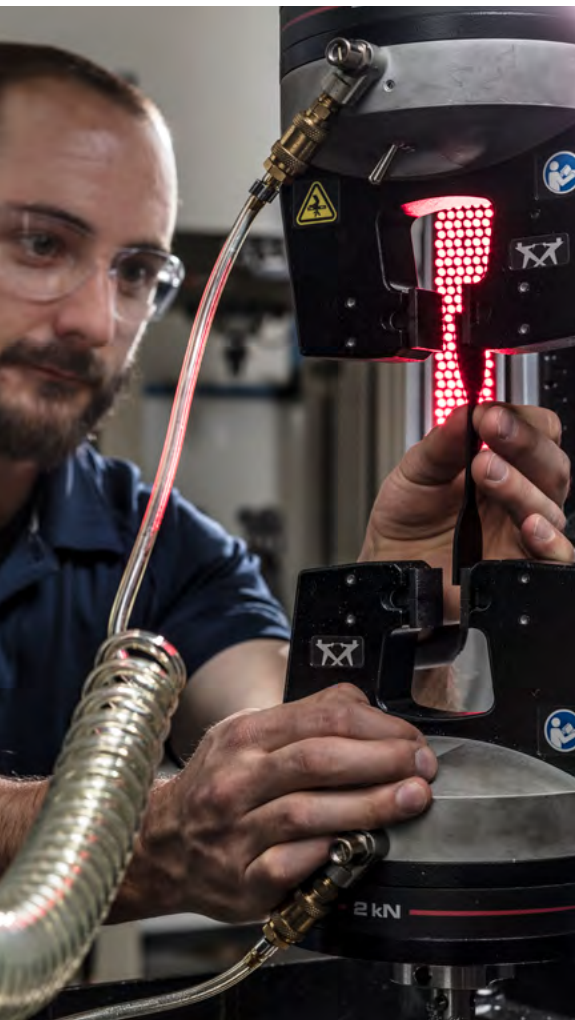
MICRO-V MULTI-RIBBED V-BELT AND TENSIONERS

Durable belt with enhanced load-carrying capacity for longer life and resistance to fatigue and shock loading.



HELPING DEFINE TRENDS THROUGH INNOVATION

Gates has been pioneering materials science, and engineering products that push the boundaries of how your customers build – redefining construction industry standards with unparalleled OE quality that’s often first-to-market and longer lasting.



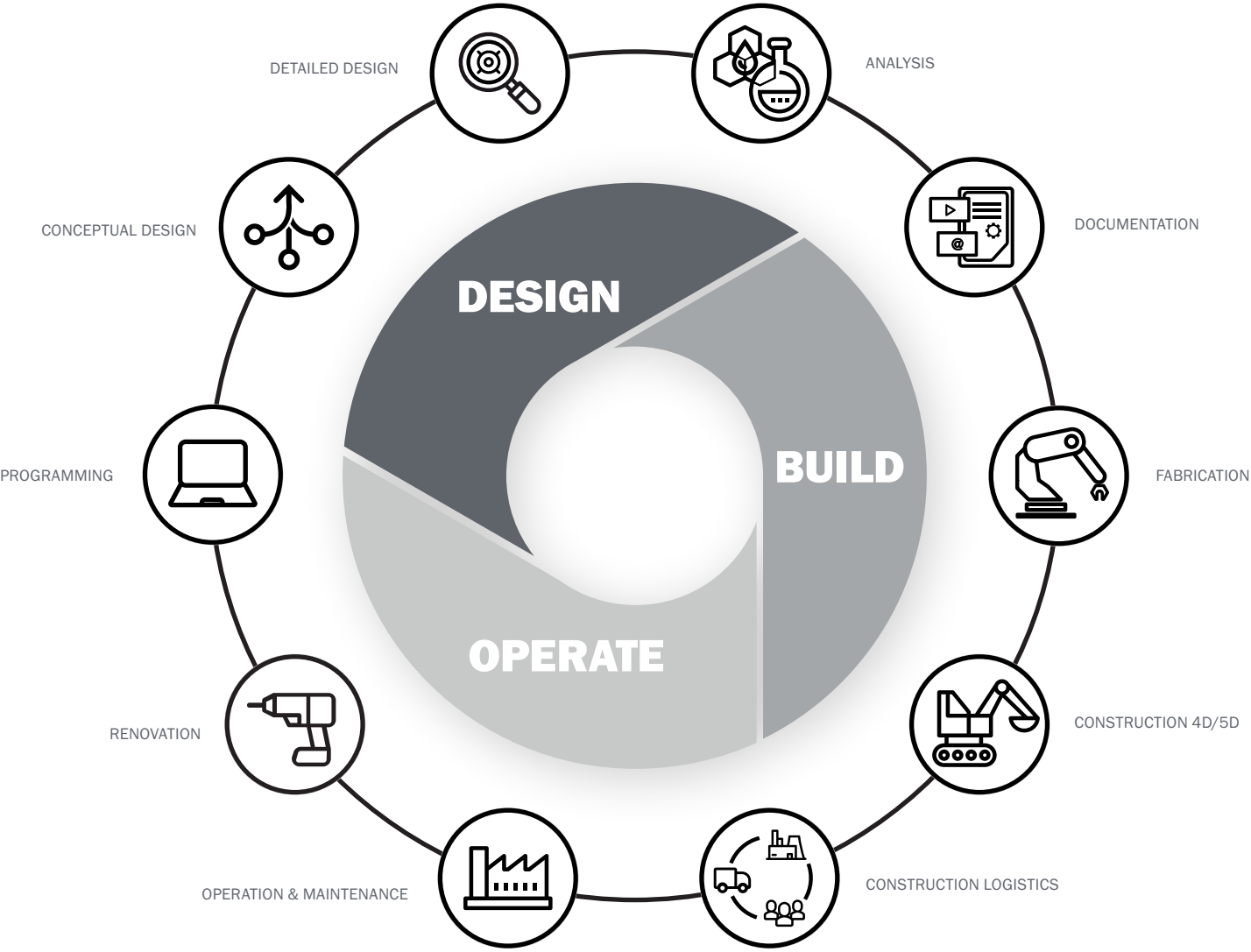
Our innovation is what drives us, with next generation products and services that make Gates the right choice to stay productive and profitable.

By keeping track of the most up to date technologies and innovations, Gates can help you navigate and benefit from future capabilities relevant to addressing industry challenges.

BUILDING INFORMATION MODELLING TECHNOLOGY

Building information modelling (BIM) technology is the holistic process for creating and managing multi-disciplinary data on a construction project across its whole life cycle – from planning and design to construction and operations. This digital projection creates an accurate virtual model, to which every aspect of the built asset is then meticulously developed. It allows users to generate computer renderings of building and utilities and helps construction industry leaders to distinguish themselves with improved efficiency.

Source: <https://www.autodesk.com/industry/aec/bim>



GROWING NEED FOR LABOUR

As the construction industry continues to boom, there has been a significant increase in demand for labour. The Generation Z demographic is being targeted through viable recruitment efforts and fortunately more women are filling competitive roles. However, skills and expertise within this industry are invaluable acquired over a long period of time and so the loss of talent is not easily resolvable.

Technology, artificial intelligence (AI) and robotic technologies are being invested in to support scarcity of labour and improve productivity. Yet the skills required to manage and interpret data generated by new tech need to be continually upgraded – reducing the quantity of roles to fill but increasing the quality of hard-to-fill sectors such as crane and lifting.

REMOTE WORKSITES AND MOBILE ACCESS

User-friendly mobile apps allow for remote worksite access beyond what has been previously possible – including real-time inspections, on site responsibility, accurate digital measurements recorded and increased safety with on hand information. Volvo's AR video feed helps to substantially reduce workers' downtime by speeding up fault-tracing, minimising travel to and from the jobsite, and gets the machine working sooner with quicker diagnostic and fixing benefits.

MODULAR AND OFFSITE CONSTRUCTION

Offsite modular and prefabrication construction aims to deliver simpler, faster, and more sustainable construction. With cost-cutting tech and groundbreaking advancements revolutionising the way we build.

AUGMENTED REALITY

Augmented reality (AR) and wearable tech superimposes an interactive experience of a real-world environment. This advanced digital modification increases project staging and pre-construction efficiency by helping developers to visualise future projects and create a more tangible picture for buyers and tenants. It can also help to accurately automate measuring of construction, simulate structural changes, and put safety-first with real-life training on potential hazards.

Volvo Construction Equipment launched its AR app 'Extract' to provide real-time tech support for dealer field technicians. The live AR video feed enables instant communication to back-office product specialists, as well as Volvo product experts and engineers – helping to improve engine quality control processes and tackle machine issues for an overall increased uptime.

CONSTRUCTION MANAGEMENT SOFTWARE

Construction database management is a vital tool for mastering operational efficiency and maintaining coordination in the life cycle of a project. Real time data compiling means a request for information can be accurately processed, along with accessible and transferable control over sharing files, budgeting, document storage, payroll and HR.

BUILDING GREENER

Sustainable construction is becoming the expected standard as more homebuyers, renters, and commercial tenants are looking for eco-friendly infrastructures. Greener construction is established via integrated technology to substantially lower a building's carbon footprint, as well as switching to more sustainable building materials to reduce the use of resources.

Gates is continuously improving its products and services to advance the way in which the world grows. With lighter, less impactful products such as the high-temperature, peroxide-cured EPDM coolant hoses, that are chlorine and risk-free, specially manufactured to help meet emission standards and carry out heavy-duty applications.



SUSTAINABLE BUILDING – THE WAY FORWARD

Construction is a fundamental component of human civilisation, with the industry generating an estimated 6.3% of European GDP and 10.5 million jobs, supporting economic and social development.

However, with all growth comes setbacks. The construction sector has been shown to have an adverse impact on the environment, with the use of heavy plant equipment significantly contributing to environmental emissions. Machinery at construction sites are the largest source of emissions, and its output is responsible for the 3rd largest share of a building’s lifetime greenhouse gas (GHG) emissions.

There is a pressing need within the industry to phase out equipment with the most pollutant engines and implement sustainable standards towards the use of zero emission technologies and processes across the full construction supply chain.

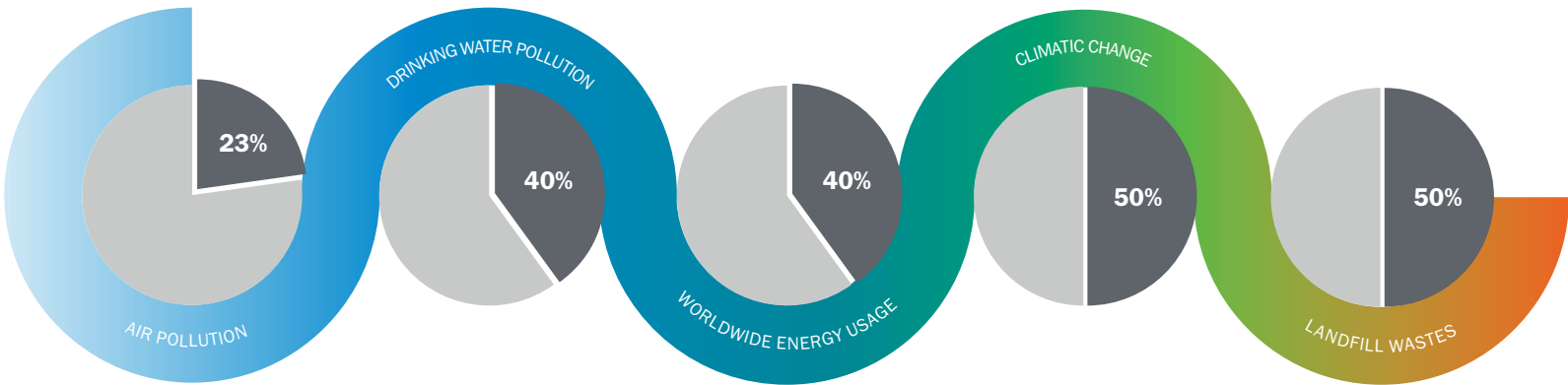
Gates has adopted a strong sustainable commitment to help meet relevant market requirements needed to accelerate the industry’s decarbonisation. You can read about our commitment to sustainability here: <https://www.gates.com/us/en/about-us/sustainability.html>

It is worth noting that this environmental issue is not isolated to local, or national-levels and requires stringent global efforts to sufficiently meet climate objectives.

As sustainability proposals are being factored into new construction projects there will need to be an increase in investments to deliver higher efficiency rates. The Next Generation EU fund aims to drive new construction projects, particularly those with an emphasis on environmental sustainability – such as the implementation of transport network upgrades and revising existing buildings – to make them more energy efficient.

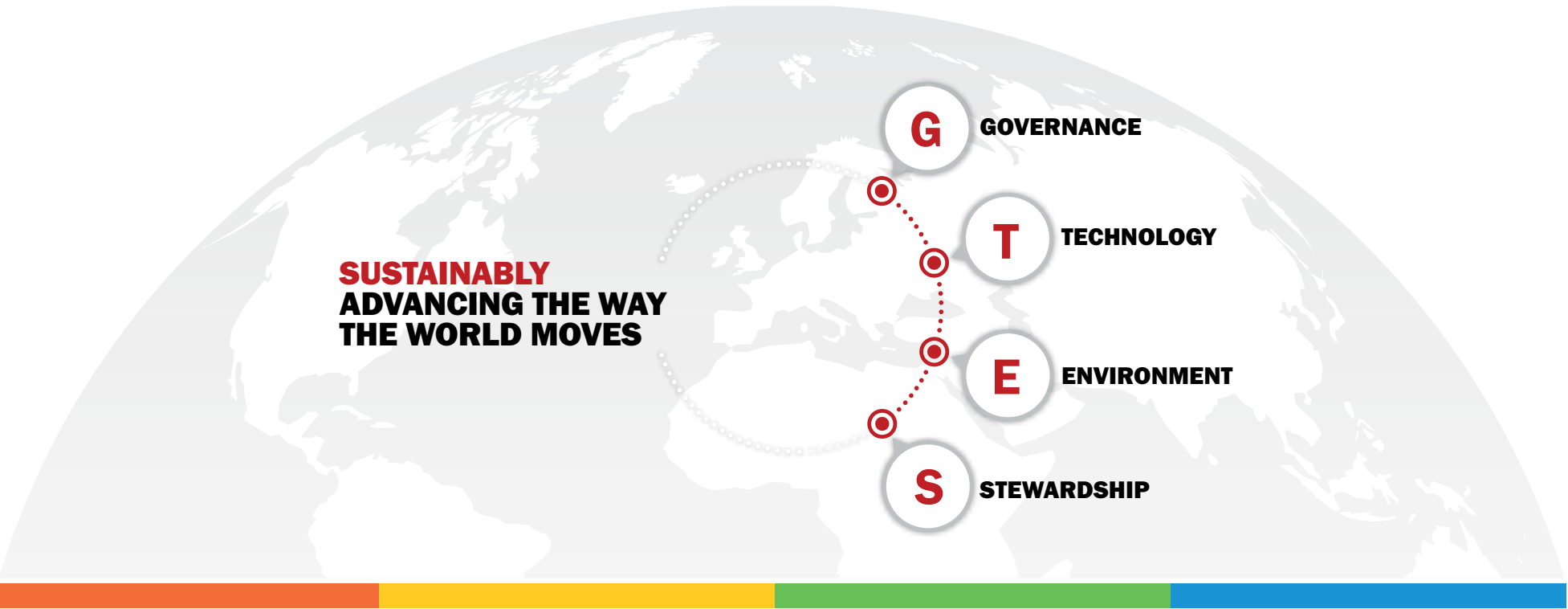


IMPACT OF THE CONSTRUCTION INDUSTRY ON THE ENVIRONMENT



Source: <https://www.euractiv.com/section/air-pollution/opinion/why-construction-machinery-must-be-included-in-the-clean-vehicles-directive/> 2018
Source: https://ec.europa.eu/growth/sectors/automotive-industry/environmental-protection/non-road-mobile-machinery_en
Source: <https://gocontractor.com/blog/how-does-construction-impact-the-environment/>

OUR PILLARS OF SUSTAINABILITY



CORPORATE GOVERNANCE

Responsibility by the board oversees environmental issues with scheduled reviews and emerging briefs dealt with as they arise.

ADVANCED TECHNOLOGY

We push the boundaries of materials science with a focus on process improvements and innovations that minimise environmental impact throughout the whole product life cycle.

ENVIRONMENTAL COMMITMENT

Across our global footprint, we are improving our manufacturing process and optimizing resource efficiencies to reduce greenhouse gas emissions, energy consumption, waste generation and water consumption.

SUSTAINABILITY STEWARDSHIP

We are dedicated to helping build, serve, empower and better the communities in which we live and work through a variety of environmental initiatives and support programmes.

Gates integrated approach to sustainability is founded on the pillars of governance, technology, the environment, and stewardship of our communities.

As a corporation, Gates seeks to align each of these pillars with the global efforts highlighted by the United Nations Sustainable Development Goals. Our efforts for sustainable development, as a result, will be rooted in our decision making and how we conduct business.

WHAT THESE TRENDS MEAN FOR MACHINE BUILDERS

Gates combines globally renowned excellence with strong in-region expertise. This means that all our products and services can be tailored to perfectly match your requirements.

If you're looking for a one-stop solution and warranty across all system applications to reduce delays in supply continuity, Gates offers an agile guarantee that ensures everything is designed to work more efficiently for you.

The construction equipment market is estimated to grow a Compound Annual Growth Rate (CAGR) of 8.4% between 2024 and 2030. With growing cities and improving infrastructures, significant technology drivers are beginning to transform the machine-building and construction sector. Placing unprecedented pressure but exponential opportunity for the construction equipment market to build a more modern and sustainable future.

CURRENT PROJECTIONS FOR THE CONSTRUCTION MACHINERY MARKET INCLUDE:

AI

Artificial intelligence and machine learning are transforming the construction industry, helping to tackle common challenges such as safety concerns, labour shortages, cost overruns and downtime.

AI-powered machines in particular are providing more precise manufacturing and increasing productivity for the equipment sector. Although AI is unlikely to completely replace the human workforce, it is projected to alter business models and increase efficiency of building operations.

CLOUD TECHNOLOGY

This innovative software solution has already been adopted by many heavy machinery companies to eliminate extraneous manual work and increase performance levels. The advanced technology helps to manage equipment and share data faster.



CONSTRUCTION EQUIPMENT RENTAL SERVICES

Globally the construction machinery market has seen a significantly increased demand for equipment rental services. According to the Construction Equipment Rental Association (CERA), developed and developing countries such as China and India are experiencing and expecting even larger peaks in the rental business.

Equipment rental companies and other companies providing rental services in European countries generated a total rental turnover of more than EUR 33.74 billion with an estimated growth in 2030 forecast to increase by 5.15%.

SMART CITIES

The smart city revolution is transforming construction and machinery sectors. As governments around the world seek new eco-friendly and efficient developments, the high-tech urban environments will require the adoption of new technologies and automated solutions by the construction machinery industry that are streamlined to bring one cohesive infrastructure to life, including buildings, green areas, and public facilities, whilst reducing emission outputs of the machinery itself.

WORK TRENDS

A shortage of construction machinery talent can be largely attributed to gaps in employees' skills who have not yet adjusted to the introduction of digitisation and technologies such as drones and robotics.

SUPPLY CHAIN DIGITALISATION

Supply chain digitalisation could offer a tech-driven process to safely distribute equipment and materials. By accurately tracking the product from manufacturers to the end-users, everything can be recorded and secured to avoid delays, theft, and disruption that impacts projects.

Although this would require highly advanced technologies and significant investments within the sector, the digital delivery infrastructure could be a key advantage for heavy machinery and construction businesses to look out for.

GLOBALLY RENOWNED, LOCALLY IMPLEMENTED



It's important to have the right products and services partner to guarantee supply continuity when and where you need it. Having multiple product providers can cause issues in the different interfaces that exist within the supply chain. Such problems include poor quality of materials and components that do not work efficiently together, and inadequate management and lack of control within the supply chain – resulting in delays and additional costs.

With all our products designed to work together, Gates is responsible for the whole system, not just one product. That means that we have the knowledge, expertise, and on hand ability to fine-tune the whole system according to our customers' needs. So, you get tailored solutions to match your market and its requirements.



GATES' GLOBAL REACH

Gates construction products and services can be found in every cornerstone of the world, and we have invested in new, purpose-built manufacturing plants across Europe with strong in-region testing, laboratory and real-world applications.

IN-MARKET MANUFACTURING AND TESTING

Gates offer an in region for region guarantee to ensure that all our products and services are specifically tailored to meet your individual application demands. This helps to reduce dependence on complicated supply chains, technical experts with language barriers, and production distribution that is outside of your

geographical convenience. With Gates as your construction partner, you get immediate peace of mind to meet challenging deadlines and keep critical operations moving.

ON-SITE CARE FROM START TO FINISH

Gates is not only with you from the ground-up but is on hand from the beginning and throughout the working relationship. Gates' personnel and affiliated partners are available on-site to help analyse your business needs, prepare the overall package and delivery of products and services, and ensure that everything runs smoothly and successfully from initial installation. This localised support and in-region expertise means you and your customers can build better, and more efficiently.

ESSENTIAL MACHINE BUILDER SKILLS

Alongside rapidly advancing technology within the construction industry, there are always more tangible skills to learn, to ensure people stay experienced and proficient in their sector as capabilities shift and develop. Here is a recap of some of the basics.

HAND TOOLS

Hand tools are the staple of any successful construction project. Workers can build to productivity and quality goals with proficient use of hand tools, air tools and torque specifications. Whether you need to assemble, test, or troubleshoot hydraulic oil drilling equipment, or construct and rebuild machines – knowing the basics of hand-held tools will ensure you can handle construction operations with confidence.

NEW MACHINES

Manufacturing facilities are continuously upgrading their machines with complex designs and intricate specifications. Skills can be acquired through training to fabricate and install structural components for new machinery, with the ability to build and debug or assemble new machines from scratch.

ENGINEERING DRAWINGS

Technical engineering drawings visualise the requirements for engineering components or equipment. There are multiple forms of engineering drawings, each with standardised languages and symbols that can be interpreted transnationally. Through learning this skill, you will be able to contribute to the successful completion of the following construction tasks:

- Assemble products and interconnect or replace parts as required
- Study and review engineering drawings to accurately determine equipment requirements, reducing cost containment and ease of manufacture.

ELECTRICAL SYSTEMS

This skill is awarded on the basis of certificate level completion, and once acquired is a valuable asset to any construction project. From this, you will be able to:

- Specialise in machine repair, assembling, and troubleshooting of hydraulic, pneumatic and electrical systems
- Conduct maintenance and work directly with engineering teams or personnel to de-bug prototype software tools.

MACHINE PARTS

Machine parts are the fundamental components that facilitate a smooth and successful operation. The three basic types of these elements include:

1. Structural components such as frame members, bearings, seals, fasteners, lubricants, axles, splines.
2. Function control parts such as buttons, indicators, switches, sensors, actuators, and computer controllers.
3. Machine mechanisms and products that regulate movement such as gears, belts, chains, linkages, brakes, clutches.

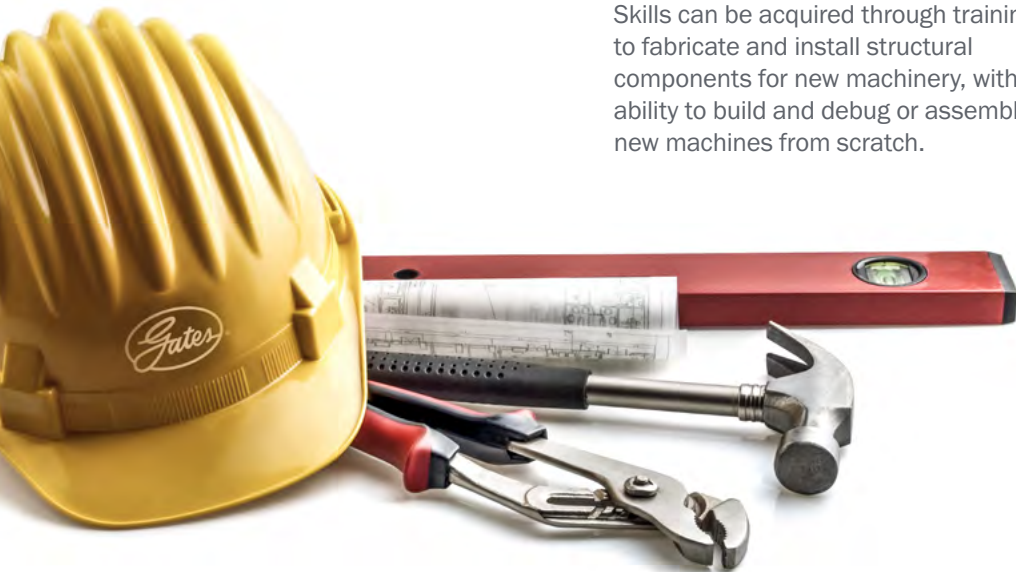
By gaining an understanding of these components, the ample construction worker will be able to fabricate and assemble machine parts, from print using correct hardware and fasteners, as well as polish the surfaces, remove rough spots and drill holes where necessary to correctly fit machine parts onto the final product.

ASSEMBLY INSTRUCTIONS

Assembly instructions are the directions in the form of pictures or text, that are included with a product to help fit the appropriate parts into the right place. As more products are being designed with at-home assembly, instruction booklets play an important role to safely set-up construction machinery.

With Gates' on-site service, application, and local support, our application engineers can fit new equipment and provide upgrades and function testing where needed. This in-house expertise can help with installation and assembly direction, as well as check appropriate routing of hydraulic hoses and provide reports on risks associated with abrasion points and twists in hoses.

Gates' product and solutions range provide a holistic one-stop system for all machine parts. Everything is designed to work harmoniously together to the same premium OE quality as their counterparts.



MEGASYS MXG 5K HYDRAULIC HOSE WITH XTRATUFF PLUS COVER

The lightweight formula of these machinery products are flexible and compact for easier handling and more ergonomic installation.

MICRO-V MULTI-RIBBED V-BELT AND TENSIONERS

This high-performance belt is designed to cover a range of versatile applications, its strong durability offers superior resistance to fatigue and shock loading meaning less replacements, less downtime.

MULTI MASTER GMV MEGAFLEX

This industry-leading flexible hose offers easy handling and even easier installation. The advanced materials and adjustable lengths allow complex routings through tight spaces as required.

MXT HYDRAULIC HOSE

With versatile handling, the MXT hose line promotes a lighter weight and stronger hold with increased flexibility and lower force-to-bend for faster installation.

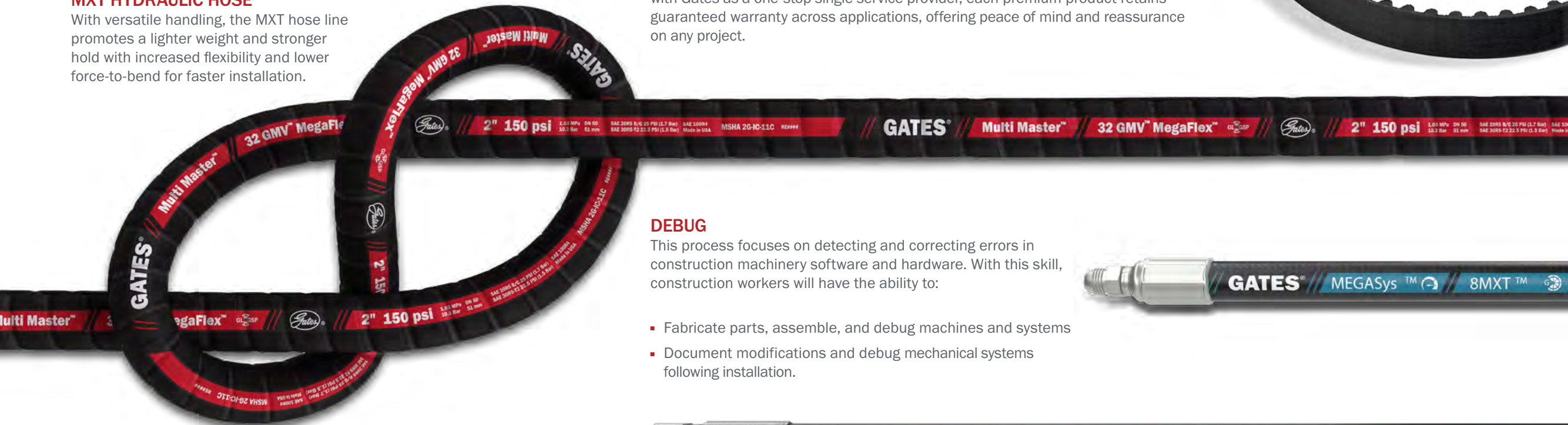
ASSEMBLY BLUEPRINTS

The skill to analyse assembly blueprints is invaluable to any construction machinery facility. By reading and interpreting assembly blueprint and specification manuals, skilled workers will be able to build machines according to customer’s specifications as well as fit and assemble components.

Gates highly skilled team of Application Engineering experts are on hand to support in the design and specification of solutions. As specialists in Fluid Power and Power Transmission products, we are with you every step of the way – from ideation to serial production, supporting validation, and implementing fit and function testing, to ensure everything is running smoothly from the ground up.

GATES SKILLS AND SERVICES SUPPORT

Zero-hour failures are a major problem within the construction industry. However, with Gates as a one-stop single service provider, each premium product retains guaranteed warranty across applications, offering peace of mind and reassurance on any project.



DEBUG

This process focuses on detecting and correcting errors in construction machinery software and hardware. With this skill, construction workers will have the ability to:

- Fabricate parts, assemble, and debug machines and systems
- Document modifications and debug mechanical systems following installation.



SAFETY, PROBLEM-SOLVING AND ADDED VALUE



As part of our commitment to our customers, we share knowledge, expertise and directions not only on application but detailing safety, preventative measures and troubleshooting.

When it comes to hydraulics for example, we have detailed strategies to mitigate hazards due to working with high pressures, flammable fluids and mechanical components and have recommended procedures for periodic inspection of assemblies to remove risk and stay productive.

Solutions have been defined for such issues as compressed gases permeating through tubes, trapped air in hydraulic systems causing blisters and tube-swell causing sluggish and unresponsive equipment. Our guidance will ensure construction machine builders working with hydraulic products can match the correct fluid to a compatible tube material, can select the right grade of cover material required to avoid abrasion, and the best product and protector to replace cracked hoses and prevent a relapse, as well as re-routing techniques to avoid crushed or kinked hoses.

Gates pro-actively act to provide solutions which prevent issues before they arise, and our safety preventative measures include our XtraTuff and MegaTuff abrasion-resistance covers, Lifeguard Protection Sleeve to protect operators, equipment, and the immediate environment, as well as hose protection itself. With Gates, you have everything from product definition, supply, assembly-guidance, safeguarding, troubleshooting and overall system guarantee.



GATES FOR CONSTRUCTION: IT'S ALL ABOUT THE RIGHT FOUNDATION

DEFINED BY INNOVATION

We've been pioneering materials science, and engineering since 1911 to deliver a ground-breaking portfolio of belts and hoses. Our rich history has driven the standards to which we operate today, with first-to-market products that exceed industry performance standards.

BUILDING BETTER FOR THE ENVIRONMENT

When your customers are building big, they need the right products to ensure their impact on the environment is small. Gates is committed to withholding the highest sustainability guarantees possible to help you and your customers meet CO₂ emissions targets.

We offer premium products that are lighter in weight and longer lasting, so that your customers can continue handling heavy-duty applications with eco-friendly solutions that work more harmoniously with the environment.

DURABLE CONSTRUCTION SOLUTIONS

Gates offers premium long-lasting systems and special technical solutions, so you and your customers have continued durability. The design and quality of each of our products is built to last, helping decrease your total cost of ownership, and ensuring optimal performance, whatever the weather and workload.

ONE-STOP SOLUTION FOR EVERY CONSTRUCTION REQUIREMENT

With Gates, you don't get just one isolated product... all our hydraulic hose fittings, belts, and tensioners are designed together to work efficiently for you, with tailored expertise available to fine-tune the overall system according to customers' needs.

Gates combines a globally renowned status with strong in-region testing and manufacturing, laboratory, and real-world applications for guaranteed supply continuity, offering technical application support every step of the way.

Our bespoke solutions, and outstanding service levels means you get a complete one-stop solution and warranty across all system applications that's cost-effective and agile.

THE FULL RANGE

MULTI MASTER GMV MEGAFLEX FOR SUCTION AND DISCHARGE APPLICATIONS

- Multi-use, multiple benefits – One hose engineered for four industrial applications: fuel, hydraulic return, coolant, and water
- Superior performance – High tensile reinforcement and steel wire helix provides maximum resistance to air, water, petroleum, and lubricating oils
- Industry leading flexibility – lightweight easy handling and retains a kink-resistant, robust structure for high-pressure operations
- Easy installation – solves complex routings through tight spaces using less hose
- Flame resistant cover – MSHA approved for critical applications
- Advanced materials science – premium quality with Gates as the original equipment manufacturer makes it adaptable for mini excavators, as well as reducing carbon footprint with lower shipping mitigation.

MEGASYS 5K HYDRAULIC HOSE WITH XTRATUFF PLUS COVER MAKES MULTI-TASKING ON A VARIETY OF APPLICATIONS

- Cutting-edge performance – Engineered to maximise uptime and boost productivity
- Patented materials science – Built with Xpiral woven spiral technology, exceeding industry performance standards for longevity of operation
- Superior ozone protection – XtraTuff Plus cover for 25x more abrasion resistance
- Robust and rigorously tested – Qualified to surpass one million impulse cycles
- Lightweight formula – 20% less weight for easier handling and installation, lowering overall emission in the final product
- Flexible and compact – lower force-to-bend for more ergonomic installation
- High pressure performance – 350 bar / 5075 psi working pressure.

MXT HYDRAULIC HOSE OFFERS A DIVERSIFIED APPLICATION THAT ALLOWS YOU TO CONSOLIDATE INVENTORY

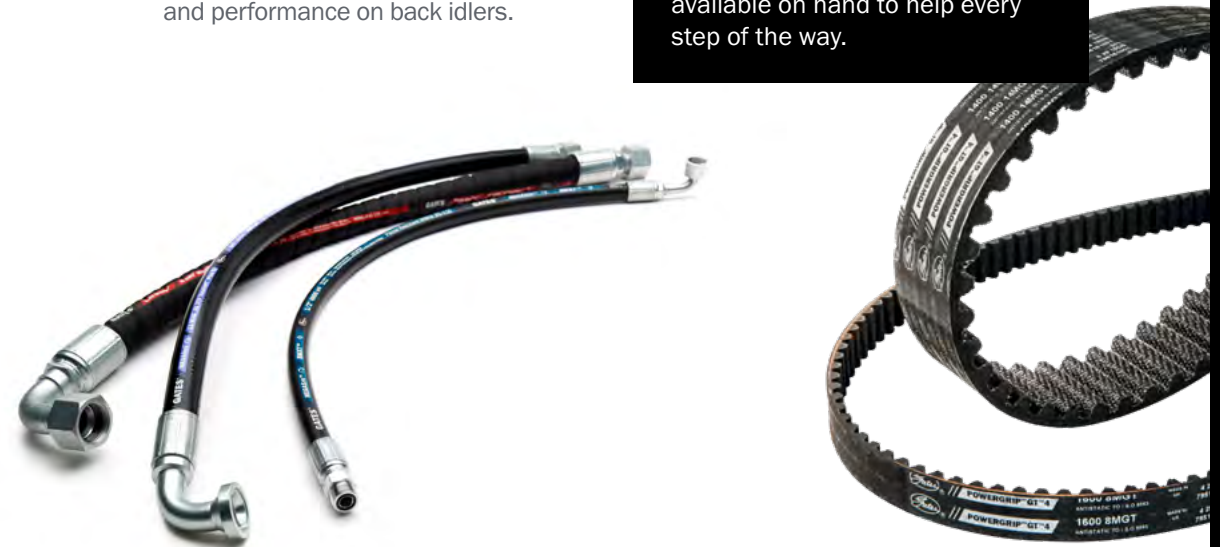
- Versatile handling – Lightweight, stronger hold
- Increased flexibility – Lower force-to-bend for faster installation
- High performance – Tested to 3 x industry standard impulse criteria
- Universally applicable – designed to meet evolving challenges
- Fully fitted – Compatible with MegaCrimp Couplings and Gates Crimpers
- Superior ozone protection – XTRATUFF cover for increased abrasion and ozone resistance.

MICRO-V MULTI-RIBBED V-BELT AND TENSIONERS ARE IDEAL FOR ANY APPLICATION THAT REQUIRES A SMOOTH DRIVE WITH HIGH-SPEED PRECISION ACCURACY

- High performance – Designed to cover range of versatile applications
- Extreme flexibility – For reduced heat build-up and improved rib crack resistance
- Superior resistance – High oil and heat resistance with protection
- Strong durability – Enhanced load-carrying capacity for longer life and resistance to fatigue and shock loading
- Balance built in – Improved belt stability and performance on back idlers.

So, whatever you and your customers are building, you need the right construction products and services partner by your side.

When choosing Gates, you get bespoke tailored solutions from the ground up. We understand the market and its requirements and know that when it comes to construction, it's all about being productive, profitable, reducing environmental impact and getting the job done right, first time. That's why our market-leading products provide long-lasting performance and operational excellence, with a team of highly skilled and friendly specialists available on hand to help every step of the way.





DRIVEN BY POSSIBILITY™

**WITH GATES AS YOUR
FOUNDATION, YOU AND
YOUR CUSTOMERS CAN
BUILD A SUCCESSFUL,
SUSTAINABLE FUTURE.**

WWW.GATES.COM

