



DRIVEN BY POSSIBILITY™

GATES SELF-ASSEMBLY SYSTEM

**WITH GATES, YOU GET MORE THAN A HOSE
GREASE-FREE OPERATION • HIGH PERFORMANCE • EASE OF USE**





DRIVEN BY POSSIBILITY™

THE GATES INTEGRATED SYSTEM APPROACH: SUPERIOR PRODUCTS ARE JUST THE BEGINNING

The true value of the Gates self-assembly system comes from the Gates Integrated System Approach: all elements of the hose assembly process are designed together. They are meticulously adjusted and in unison. As a result, the Gates Integrated System Approach provides you and your customers with factory-quality assemblies which meet or exceed all international standards.

In addition, this approach ensures full compliance with the European Machinery Directive. Our dedication to offer you and your customers reassuringly superior products works results: we take pride in defending our reputation as the world's most trusted hydraulic hose assembly manufacturer.



BECOME A TRUE GATES SOLUTION PROVIDER

HOW DOES THE GATES INTEGRATED SYSTEM APPROACH WORK AND WHAT'S IN IT FOR YOU?



SUPERIOR PRODUCTS, MANUFACTURED TO STRINGENT TOLERANCES

Our global hoses and couplings are manufactured to rigorous tolerances, making sure that they perform to such a high standard they'll work safely for a longer time.

Benefit from less downtime.

ADVANCED SELF-ASSEMBLY MACHINES AND DIES, RIGOROUSLY VALIDATED

Our self-assembly machines make it quick and easy for you to produce the hose and coupling combinations you need. Gates dies have a special proprietary profile design that creates an almost perfectly cylindrical and durable crimp. We test and validate them at our factory so you can be sure they'll work time after time in your workshop.

Increase the efficiency in your workshops.

OPTIMAL CRIMP DATA, DERIVED FROM METICULOUS TESTING

Each Gates crimper comes with validated crimp settings data for the complete European hose and coupling product range. So there's no need for time consuming trial-and-error to find the ideal settings! Gain fast and easy access to crimping instructions and crimp diameters via ecrimp.gates.eu or the eCrimp app.

Set crimpers with the greatest of ease.

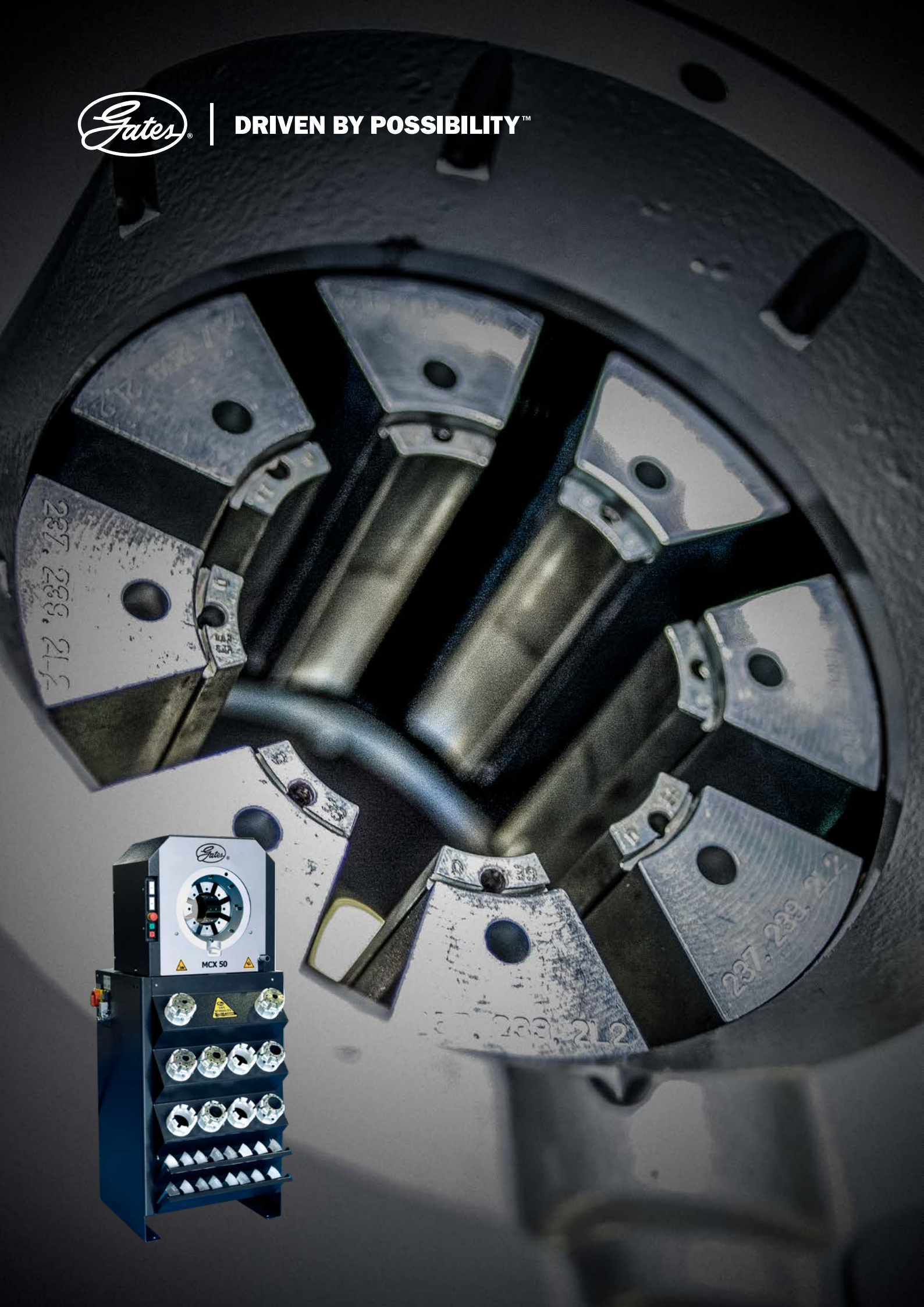
FACTORY-QUALITY PERFORMANCE MEETING OR EXCEEDING INTERNATIONAL STANDARDS

All this put together ensures the quality, performance and reliability that Gates is known for. When Gates hose and couplings are crimped in accordance with the Gates Integrated System, they yield factory-quality assemblies fully compliant to European Directives and legislation exceeding all international standards. Gates global wire-braid hose and MegaCrimp™ coupling assemblies are developed to withstand more than 3 times international standards. Gates spiral wire hose and GlobalSpiral coupling assemblies will work beyond a million impulse cycles.

Trust Gates exceptional performance and reliability.



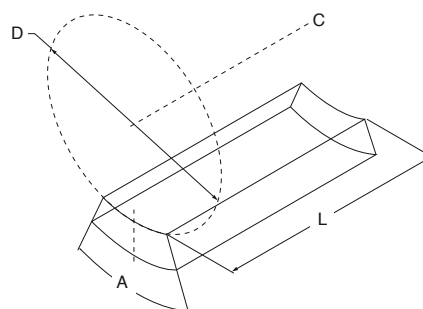
DRIVEN BY POSSIBILITY™



THE NEW GATES SELF-ASSEMBLY MACHINERY PROGRAMME: WITH GATES, YOU GET MORE THAN A HOSE

INNOVATIVE SELF-ASSEMBLY MACHINES AND DIES, RIGOROUSLY VALIDATED

Gates MCX range of grease-free self-assembly machines and dies are custom-designed to work with Gates hoses and couplings. Gates dies are characterised by a proprietary profile design for an optimal cylindrical crimp. They are tried, tested and validated to provide you with the most optimal crimp settings. Furthermore, Gates die sets are logically organised to facilitate die selection time after time.



GREASE-FREE OPERATION



Gates self-assembly machinery programme lowers your maintenance costs through grease-free operation. Gates MCX crimpers come with a unique self-lubricating slide bearing system, which fully eliminates metal-to-metal abrasion between master dies and the crimper head and decreases friction by 20%.

An additional result of the self-lubricating slide bearing system is that your working environment becomes cleaner, while dirt and debris are less likely to cause costly downtime. This enduring, maintenance-poor design brings the total cost of ownership of Gates crimpers to record lows.

EASE OF USE

We believe products that are easy and pleasant to use improve user productivity. That is why all Gates applications for crimping, cutting and marking are designed to ensure fast, comfortable handling. In all electrical-driven crimpers, a standard built-in storage rack is positioned for quicker die selection, while die sets are logically organised and within easy reach of the operator. Field service crimping devices are easily portable and come with a detachable die storage case, solid and durable handles and resistant rubber protection layers. Feedback from our user community has shown that ergonomic design is widely appreciated, not in the least because of higher productivity figures and fast approval by local Health and Safety Executives.



E-CRIMP: ONLINE CRIMP SETTINGS IN SECONDS



In line with the Gates Integrated System Approach (GISA) each Gates crimping machine comes with validated crimp settings for the complete hose and coupling range, allowing you to produce high-quality Gates assemblies yourself meeting and/or exceeding reference international standards. The European Gates eCrimp database provides you with the most up-to-date crimp data in just a few clicks! Gain fast and easy access to crimping instructions and crimp diameters. No need for time-consuming trial-and-error testing or sifting through a stockpile of outdated CD-ROMs to find the ideal machine settings! Simply go to ecrimp.gates.eu or download the mobile eCrimp app (available for Android and iOS) and get immediate access to the crimp library without registration.



WORKSHOP MACHINERY OPTIONS

In the Gates workshop, safe, fast and efficient assembly of hydraulic hoses and couplings is made simple. All machines are custom-designed to work with a well-defined range of Gates hoses and couplings allowing production of factory-quality assemblies fully complying with European Directives and the most stringent international standards.

No matter what your workshop needs, whether you are a starter, a professional, or a full-service workshop, Gates has the right product offering for you.

| | CUTTING | MARKING | CRIMPING |
|--------------------------------------|--|---|--|
| Full service 2" | MKX 40  | MSX 50  | MCX 50  |
| Professional service up to 1.1/4" | MKX 30  | MSX 50  | MCX 30  |
| Starter up to 1" | MKX 25  | MSX 50  | MCX 25  |





MOBILE MACHINERY OPTIONS

A Gates hose assembly is much more than the sum of its components. It is the combined result of a rigorous test regime and of a tightly controlled manufacturing process, both at Gates and at the point of assembly.

To reduce the risk of premature failure due to variations in the assembly process, Gates has developed a special proposition for mobile service operations allowing them to benefit from the simplified and superior Global range of no-skive hoses and couplings.

And thanks to the Gates Integrated System, mobile service operators can offer their customers the superior quality and performance that they deserve.

| | CUTTING | MARKING | CRIMPING |
|--------------------------------------|--|--|--|
| Professional service up to 1.1/4" | MKX 25  | MSX 50  | MCX 30  |
| Starter up to 1" | MKX 25  | MSX 50  | MCX 25  |



FIELD SERVICE OPTIONS

In the field, every minute counts. In today's environment, equipment, whether it be agricultural, construction or mining, simply cannot afford unnecessary downtime. That's why Gates has developed a range of small, portable and easy to use crimpers specifically designed for end-users on site.

And since these simple, lightweight machines are designed as part of the Gates Integrated System, end-users are assured of factory-quality no-skive assemblies – even in the field!

| CRIMPING | | |
|----------------------------------|---|---|
| No-skive spiral hose up to 1" | MCX 20 | |
| |  | |
| Wire-braid hose up to 1" | MC 1001 manual | MC 1001 air operator |
| |  |  |

TECHNICAL SPECIFICATIONS

| CUTTERS | | MKX 25 | | MKX 30 | MKX 40 |
|-------------------------|--------------|------------|--------------|------------|------------|
| | | DC | 1 PHASE | 3 PHASE | 3 PHASE |
| POWER SUPPLY | | 12V | 220V | 380V | 380V |
| MAXIMUM CAPACITY | WB | 1.1/4" | 1.1/4" | 1.1/4" | 2" |
| | 4SW | 1.1/4" | 1.1/4" | 1.1/4" | 2" |
| | 6SW | n/a | n/a | 1.1/4" | 2" |
| MOTOR (KW) | | 2.0 | 2.2 | 3.0 | 4.6 |
| BRAKE MOTOR | | NO | NO | YES | YES |
| SUCTION CONNECTION (PN) | | 8000-10375 | 8000-10375 | 8000-10368 | 8000-10395 |
| CUTTING BLADE | SIZE (MM) | 250x2.5x40 | 200x1.6x25.4 | 275x3x30 | 350x3x30 |
| | PLAIN (PN) | 8000-10458 | 8000-10464* | 8000-10351 | 8000-10461 |
| | | | 8000-10465** | | |
| | SLOTTED (PN) | n/a | 8000-10223* | 8000-10222 | 8000-10386 |
| | | | 8000-10352** | | |
| | DIAMOND (PN) | 8000-10459 | 8000-10463* | 8000-10460 | 8000-10462 |
| | | | 8000-10457** | | |
| DIMENSIONS (MM) | H | 365 | 540 | 300 | 430 |
| | W | 567 | 510 | 440 | 690 |
| | L | 470 | 400 | 540 | 745 |
| WEIGHT (KG) | | 29 | 20 | 43 | 75 |
| PRODUCT NUMBER | | 7480-19189 | 7480-19190 | 7480-19191 | 7480-19229 |

*<s/n GA00454

**>=s/n GA00454

PN in bold is the standard supplied cutting blade.



| CRIMPERS | | MC 1001 | | MCX 20 |
|----------------------|------------------|------------|-------------|------------|
| | | MANUAL | PNEUMATIC | MANUAL |
| POWER SUPPLY | | -- | 7bar/100psi | -- |
| MAXIMUM CAPACITY | WB | 1" | 1" | 1.1/4" |
| | 4SW | -- | -- | 1" |
| | 6SW | -- | -- | -- |
| CRIMPING FORCE (TON) | | 27 | 27 | 90 |
| MOTOR (KW) | | -- | -- | -- |
| DIE SET | | MC1001-Dxx | MC1001-Dxx | 263-Dxx |
| CYCLE TIME (SEC) | | -- | -- | -- |
| DIE STORAGE | | box | box | box |
| DIMENSIONS (MM) | H | 460 | 460 | 370 |
| | W | 280 | 280 | 450 |
| | L | 390 | 390 | 470 |
| WEIGHT (KG) | | 24 | 22 | 33 |
| PRODUCT NUMBER | | 7480-19164 | 7480-19165 | 7480-19181 |
| OPTIONS (PN) | MARKING DIES | -- | -- | χ*** |
| | QUICK DIE CHANGE | -- | -- | -- |
| | BACK STOP | -- | -- | -- |
| | FOOT PEDAL | -- | standard | -- |

* only with intermediate dies

** marking die in type 239 only up to 239-D37

*** marking die in type 263 only up to 263-D35



| MCX 25 | | | MCX 30 | | | MCX 50 |
|------------|------------|------------|------------|------------|------------|--|
| DC | 1 PHASE | 3 PHASE | DC | 1 PHASE | 3 PHASE | 3 PHASE |
| 12V | 220V | 380V | 12V | 220V | 380V | 380V |
| 1.1/4" | 1.1/4" | 1.1/4" | 1.1/4" | 1.1/4" | 1.1/4" | 2" |
| 1" | 1" | 1" | 1.1/4" | 1.1/4" | 1.1/4" | 2" |
| -- | -- | -- | 1.1/4" | 1.1/4" | 1.1/4" | 2" |
| 130 | 130 | 130 | 180 | 180 | 180 | 280 |
| 1.8 | 2.2 | 3 | 1.8 | 2.2 | 3 | 5.5 |
| 239-Dxx | 239-Dxx | 239-Dxx | 239-Dxx | 239-Dxx | 239-Dxx | 239*/237-Dxx |
| 39 | 39 | 19 | 41 | 41 | 20 | 18 |
| rack | rack | rack | rack | rack | rack | rack |
| 550 | 790 | 790 | 550 | 790 | 790 | 1400 |
| 475 | 600 | 600 | 475 | 600 | 600 | 580 |
| 395 | 550 | 550 | 395 | 550 | 550 | 610 |
| 115 | 160 | 160 | 125 | 170 | 170 | 410 |
| 7480-19182 | 7480-19183 | 7480-19184 | 7480-19185 | 7480-19186 | 7480-19187 | 7480-19236 |
| χ** | χ** | χ** | χ** | χ** | χ** | χ** |
| 7480-19194 | 7480-19194 | 7480-19194 | 7480-19200 | 7480-19200 | 7480-19200 | 7480-19195 |
| -- | -- | -- | -- | -- | -- | 7480-19198 |
| -- | -- | -- | -- | -- | -- | 7480-19199: ≤ s/n GA02022 8000-10481: > s/n GA02022 |

* only with intermediate dies

** marking die in type 239 only up to 239-D37

*** marking die in type 263 only up to 263-D35

OVERVIEW: CRIMPING MACHINES



MC 1001

Lightweight, portable crimper designed for reliability in field service. Comes with separate box, designed to contain complete set of dies. The pneumatic version has a foot-operated air pump. Crimps no-skive MegaCrimp® couplings for wire-braid hose up to 1".



MCX 20

Powerful, lightweight, portable hand-operated crimper, ideal for field service operations. Comes with separate box, designed to contain complete set of dies. Crimps no-skive GlobalSpiral™ couplings up to 1" and no-skive MegaCrimp® couplings for wire-braid hose up to 1.1/4".



MCX 25

Compact crimper for low-volume production. Ideal as starter machine or for small workshops. Crimps no-skive GlobalSpiral™ couplings up to 1" and no-skive MegaCrimp® couplings for wire-braid hose up to 1.1/4". Equipped with a die set storage rack allowing for logically organised die storage within easy reach of the operator, thus speeding up die selection and assembly. Also available for mobile service with DC power pack.



MCX 30

Compact, operator-friendly machine to crimp the complete Gates range up to 1.1/4". Optional foot pedal to enable hands-free operation. Equipped with a die set storage rack allowing for logically organised die storage within easy reach of the operator, thus speeding up die selection and assembly. Also available for mobile service with DC power pack.



MCX 50

Full-range crimper (up to 2" six spiral wire hose) for the professional workshop. Optional foot pedal to enable hands-free operation. Equipped with a die set storage rack allowing for logically organised die storage within easy reach of the operator, thus speeding up die selection and assembly.

Equipped with a user-friendly front plate design allowing to support a wider crimp capability. The special cut out provides more room to maneuver, hence facilitating the crimping of even more special configurations (left picture)

OVERVIEW: CRIMPING MACHINE ACCESSORIES



MARKING DIES

To facilitate compliance with the European Machinery Directive, which insists that finished assemblies are marked with the manufacturer's name and the manufacturing date code, a range of marking dies is available for the MCX 50, MCX 30, MCX 25 and MCX 20 machines.



QUICK DIE CHANGE

The universal quick die change allows fast and easy change of dies without risk of damage to the die sets. The transparent shield of the quick die change allows you to quickly and safely position die sets into the master dies of the crimper head. A single press of the closing button is enough to lock the dies safely in place and rapidly produce a perfect hose assembly. When buying an electrical crimper, the QDC that goes together with the respective machine will be included in the package.

OVERVIEW: CUTTING MACHINES



MKX 25

The MKX 25 is a compact hose cutting machine, that cuts up to 1.1/4" of four spiral wire hose; making it an ideal cutter for mobile servicing.

Similar to all of our current cutters, the MKX25 incorporates a unique drive motor with twin bearings and oversized shafts, giving you a genuine benefit while cutting.

Straight cuts reducing scrap. Less contamination in the shop and in the end product. Maximal motor lifetime, giving you the lowest cost of ownership in the market. Faster cutting.



MKX 30

Robust cutter for all types of workshops. Cuts up to 1.1/4" six spiral wire hose. The brake motor ensures the blade stops turning within 10 seconds after switch-off.



MKX 40

Heavy-duty hose cutter allowing quick and reliable production across all hose size ranges. Cuts up to 2" six spiral wire hose. The brake motor ensures the blade stops turning within 10 seconds after switch-off. For workshop professionals who want to further enhance their set-up and improve ease-of-use.



CUTTING BLADES

Be sure to replace your cutting blade on time. A worn-out blade puts greater pressure on the blade and motor, increasing the risk of a machine breakdown. Gates commits itself to offer spare cutting blades in 3 different versions: plain, slotted and diamond. Diamond cutting blades have the following advantages:

Cutting is twice as fast. Less smoke generation. Less heat emitting. Unchanged hardness of the cutting blade even at high temperatures. Less chance of debris in the hose. Less risk of separating the rubber from the wire. Lower power demand. Extended machine capability. Outlives standard blades by far at only twice the price!



OVERVIEW: TOOLS



MSX 50 MARKING MACHINE

This hand-operated marking machine is a precise, compact service-free bench unit for Gates ferrules, one-piece and two-piece fittings. The MSX 50 is equipped with a hand wheel to adjust the character setting to the ferrule for the requested marking depth. The slot in the character holder allows for easy character placement. Please contact Gates for order info on the required characters.



MEGACRIMP® DIGITAL CALIPER

A handy tool which measures finished outside diameters. Special design for easy measuring of the finished diameters on -4, -5 and -6 MegaCrimp case.



MEGACRIMP® INSERTION TOOL

The MegaCrimp® coupling insertion tool offers an easy way to confirm the right insertion depth for all Gates wire-braid hydraulic hoses. It also verifies the squareness of cut!



PUSH-ON TOOL

Pushing couplings on hoses can be a tough job. Gates Push-on tool makes the insertion of couplings on hoses quick and easy. This hand-operated coupling machine, with its rugged cast iron and steel construction, eliminates the hard work of manually pushing stems into hoses and improves your hose assembly cost-efficiency.



MKX SUCTION UNIT

Dust collection has become an important topic in European workplace regulation (e.g. ISO 4225 – ISO 1994) Therefore, professional workshops know that one of the most important pieces of machinery in the workshop is an adequate suction device. The MKX suction unit allows you to safely remove rubber particles and smoke released during the hose cutting operation. The particles are sucked into the container removing any hindering smell. The spark arrester between the cleaner box and the suction hose also ensures that glowing particles and rubber waste are immediately removed, thus minimizing the risk for fire. Depending which MKX hose cutter you have selected you can select the right adaptor to connect your hose cutter to the MKX suction unit in the technical specifications table on page 11.


MKX40 adaptor ring: 80 mm O connection (8000-10395)


MKX30 adaptor ring: 50 mm O connection (8000-10368)


MKX25 adaptor ring: 40 mm O connection (8000-10375)

DIE SELECTION MATRIX: MEGASYS

| -SIZE | HOSE | | | | | | COUPLING | DIE | MC1001 | MCX20 | MCX25 | MCX30 | MCX50 |
|-------|-------|-------|-------|-------|----|----|----------|------|----------------|-------------|-------------|-------------|-------------------|
| | | | | | | | | | MC1001 -DXX | 263 -DXX | 239 -DXX | 239 -DXX | 239* /237 -DXX |
| -4 | M6K | M5K | M4K | M3K | | | G | D21 | 7482-19810 | 8000-10190 | 7482-19924 | 7482-19924 | 7482-19924 |
| | M2T | MXT | GTH | G3H | G2 | G1 | G | D21 | 7482-19810 | 8000-10190 | 7482-19924 | 7482-19924 | 7482-19924 |
| -5 | | M5K | M4K | M3K | | | G | D22 | 7482-19811 | 8000-10191 | 7482-19925 | 7482-19925 | 7482-19925 |
| | M2T | MXT | GTH | | G2 | G1 | G | D22 | 7482-19811 | 8000-10191 | 7482-19925 | 7482-19925 | 7482-19925 |
| -6 | | M5K | M4K | M3K | | | G | D22 | 7482-19811 | 8000-10191 | 7482-19925 | 7482-19925 | 7482-19925 |
| | M2T | MXT | GTH | G3H | G2 | G1 | G | D22 | 7482-19811 | 8000-10191 | 7482-19925 | 7482-19925 | 7482-19925 |
| | MXG4K | | | | | | GS | D32 | | | 8000-10219 | 8000-10219 | 8000-10219 |
| | EFG6K | EFG5K | EFG4K | | | | GS | D33 | | 8000-10192 | 7482-19926 | 7482-19926 | 7482-19926 |
| -8 | | M5K | M4K | M3K | | | G | D33 | 7482-19812 | 8000-10192 | 7482-19926 | 7482-19926 | 7482-19926 |
| | M2T | MXT | GTH | G3H | G2 | G1 | G | D33 | 7482-19812 | 8000-10192 | 7482-19926 | 7482-19926 | 7482-19926 |
| | MXG4K | | | | | | GS | 22mm | | | 8000-10398 | 8000-10398 | 8000-10398 |
| | EFG6K | EFG5K | EFG4K | | | | GS | D33 | | 8000-10192 | 7482-19926 | 7482-19926 | 7482-19926 |
| -10 | | | M4K | M3K | | | G | D34 | 7482-19813 | 8000-10193 | 7482-19927 | 7482-19927 | 7482-19927 |
| | M2T | MXT | GTH | G3H | G2 | G1 | G | D34 | 7482-19813 | 8000-10193 | 7482-19927 | 7482-19927 | 7482-19927 |
| | MXG4K | | | | | | GS | D33 | | 8000-10192 | 7482-19926 | 7482-19926 | 7482-19926 |
| | EFG6K | EFG5K | EFG4K | | | | GS | D35 | | 8000-10194 | 7482-19928 | 7482-19928 | 7482-19928 |
| -12 | | | M4K | M3K | | | G | D35 | 7482-19814 | 8000-10194 | 7482-19928 | 7482-19928 | 7482-19928 |
| | M2T | MXT | GTH | | G2 | G1 | G | D35 | 7482-19814 | 8000-10194 | 7482-19928 | 7482-19928 | 7482-19928 |
| | MXG4K | | | | | | GS | D35 | | 8000-10194 | 7482-19928 | 7482-19928 | 7482-19928 |
| | EFG6K | EFG5K | EFG4K | | | | GS | D35 | | 8000-10194 | 7482-19928 | 7482-19928 | 7482-19928 |
| -16 | | | | M3K | | | G | D37 | 8000-10069 | 8000-10196 | 7482-19929 | 7482-19929 | 7482-19929 |
| | M2T | MXT | GTH | | G2 | G1 | G | D37 | 8000-10069 | 8000-10196 | 7482-19929 | 7482-19929 | 7482-19929 |
| | MXG4K | | | | | | GS | D37 | | 8000-10196 | 7482-19929 | 7482-19929 | 7482-19929 |
| | EFG6K | EFG5K | EFG4K | | | | GS | D37 | | 8000-10196 | 7482-19929 | 7482-19929 | 7482-19929 |
| -20 | M2T | | | | | | G | D38 | | | 8000-10358 | 8000-10358 | 8000-10358 |
| | | | | | G2 | G1 | G | D39 | | 8000-10197 | 7482-19930 | 7482-19930 | 7482-19930 |
| | | | EFG4K | EFG3K | | | GS | D39 | | | | 7482-19930 | 7482-19930 |
| | EFG6K | EFG5K | | | | | GS | D310 | | | | 8000-10166 | 8000-10166 |
| -24 | M2T | | | | G2 | G1 | GSP | D310 | | | | | 8000-10166 |
| | | | | EFG3K | | | GSP | D311 | | | | | 8000-10167 |
| | EFG6K | EFG5K | | | | | GSM | D311 | | | | | 8000-10167 |
| -32 | M2T | | | | G2 | G1 | GSP | D312 | | | | | 8000-10204 |
| | | | | EFG3K | | | GSP | D313 | | | | | 8000-10205 |
| | EFG6K | EFG5K | | | | | GSM | D314 | | | | | 8000-10206 |

 wire braid reinforcement

 4 spiral wire reinforcement

 6 spiral wire reinforcement

* only with intermediate dies



DIE SELECTION MATRIX: PRO SERIES

| -SIZE | HOSE | | | | COUPLING | DIE | MC1001 | MCX20 | MCX25 | MCX30 | MCX50 |
|-------|-------|-------|-----|-----|----------|------|----------------|-------------|-------------|-------------|-------------|
| | | | | | | | MC1001 -DXX | 263 -DXX | 239 -DXX | 239 -DXX | 239 -DXX |
| -4 | Pro2T | Pro1T | CR2 | CR1 | EX | D31B | | | 8000-10218 | 8000-10218 | 8000-10218 |
| -5 | Pro2T | Pro1T | CR2 | CR1 | EX | D31B | | | 8000-10218 | 8000-10218 | 8000-10218 |
| -6 | | Pro1T | | CR1 | EX | D31B | | | 8000-10218 | 8000-10218 | 8000-10218 |
| | Pro2T | | CR2 | | EX | D32 | | | 8000-10219 | 8000-10219 | 8000-10219 |
| -8 | Pro2T | Pro1T | | CR1 | EX | D32 | | | 8000-10219 | 8000-10219 | 8000-10219 |
| | Pro2T | | CR2 | | EX | 22mm | | | 8000-10398 | 8000-10398 | 8000-10398 |
| -10 | Pro2T | Pro1T | CR2 | CR1 | EX | D33 | | | 7482-19926 | 7482-19926 | 7482-19926 |
| -12 | Pro2T | Pro1T | CR2 | CR1 | EX | D34 | | | 7482-19927 | 7482-19927 | 7482-19927 |
| -16 | | Pro1T | | | EX | D35 | | | 7482-19928 | 7482-19928 | 7482-19928 |
| | Pro2T | | CR2 | CR1 | EX | D36 | | | 8000-10220 | 8000-10220 | 8000-10220 |

Note 1: For more hose coupling combinations we kindly refer you to ecrimp.gates.eu or the Gates mobile eCrimp app.

Note 2: High/Low Temp, MTF, XTF & Twin solutions follow the die set recommendation of its standard equivalent



WHAT DOES THE SAFE HYDRAULICS TRAINING PROGRAMME OFFER?

- Safety and preventive maintenance training
- Global and local expertise by Gates application engineers
- Certified trainers
- Information tailored for assembly workshops and end-users

HOW DOES THE SAFE HYDRAULICS TRAINING PROGRAMME WORK?

- Seminars via Gates exclusive partner network
- Covers the entire process: storage, selection, installation and inspection
- Includes an overview of relevant EU legislation, complete with practical examples

THE GATES SAFE HYDRAULICS TRAINING PROGRAMME: A HIGHER STANDARD IN SAFETY

What makes a system really stand out? When all of the components work together immaculately – something that rarely happens when parts are sourced from multiple vendors. Mixing and matching couplings and hoses from different manufacturers can lead to premature assembly failure, as hoses, couplings, assembly equipment and crimping tolerances from different vendors are never guaranteed to offer safe interchangeability. Improper assembly and installation is bound to compromise performance and human safety. If a hydraulic hose assembly fails, the assembler can be held accountable for damages, as stated by European legislation (200642/CE - ISO 4413:2010).

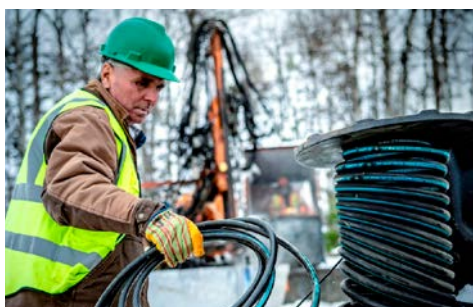
To help you avoid material and personal hazards and liability issues, Gates Fluid Power Europe will provide you with expert information on safety issues affecting hydraulic hose assemblies through the Safe Hydraulics training programme.

GATES IS YOUR ONE-STOP SHOP FOR SAFE, LONG-LASTING HYDRAULICS THAT ARE DESIGNED TO INTERACT FLAWLESSLY: HOSES, COUPLINGS, DIES, MACHINES, TOOLS ARE FINE-TUNED TO BE FULLY COMPATIBLE. PROVIDING YOU AND YOUR CUSTOMERS WITH SAFE, LONG-LASTING HYDRAULIC ASSEMBLIES IS OUR MAIN CONCERN.

GATES, YOUR KEY TO FACTORY-QUALITY PERFORMANCE MEETING OR EXCEEDING ALL INTERNATIONAL STANDARDS MATRIX

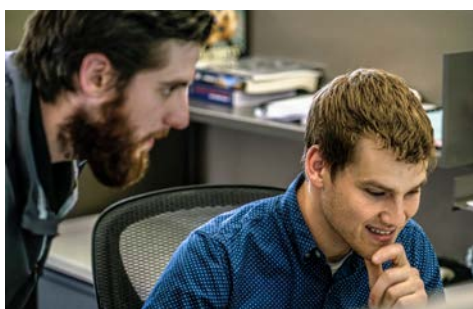
Choosing Gates self-assembly crimping, cutting and marking machines means choosing grease-free operation, high performance and ease of use. Whatever your requirements, teaming up with Gates guarantees ample choice. You can choose from a comprehensive range of self-assembly machinery which is fine-tuned to meet the specific requirements of workshops, mobile service operations or field repairs.

TEAMING UP WITH GATES GUARANTEES YOU A THREEFOLD RETURN ON INVESTMENT:



SUPERIOR PERFORMANCE AND UNRIVALLED SAFETY

All Gates hose assembly parts and Gates hose assembly machines are constructed in unison. This Integrated System Approach to product design ensures a perfect fit, unrivalled safety and performance meeting or exceeding all international standards.



PROFESSIONAL ADVICE AND SERVICES

Gates products come with a wide range of precision tools, crimp data, reference material, accessories and training sessions to facilitate your assembly operation in a safe and clean working environment.

| COMPONENT | COST IN % |
|-------------------------------|-----------|
| Hose | 10% |
| Couplings | 7% |
| Assembly cost | 6% |
| Disconnection failed assembly | 5% |
| Connection assembly | 4% |
| Transportation & waiting time | 26% |
| Production loss | 43% |

LOWER TOTAL COST OF OWNERSHIP

Gates products are designed to go the long road. High-quality materials and advanced product features optimise your operations and bring downtime and maintenance costs to a reassuring low.

You can find more information on the true value of teaming up with the leading total fluid power transmission supplier at www.gates.com



DRIVEN BY POSSIBILITY™

CUSTOMER EXPERIENCE TEAM

Korte Keppestraat 21/51
B-9320 EREMBODEGEM
inforequest@gates.com