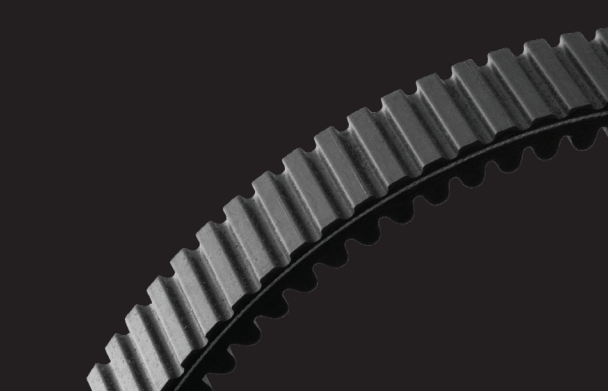




# CVT BELTS BUILT FOR THE TOUGHEST TRAILS



# G-FORCE™ PRODUCT LINES



Gates G-Force is an entire family of superior CVT belts engineered for the most demanding conditions – providing an OE-Perfect Fit with matching shift curves & pulley speed ratios.

G-Force drive belts are field-tested, and trusted within the toughest conditions to bring durability, simplicity, performance, and value to your off-road adventures.

## G-Force PowerLink™

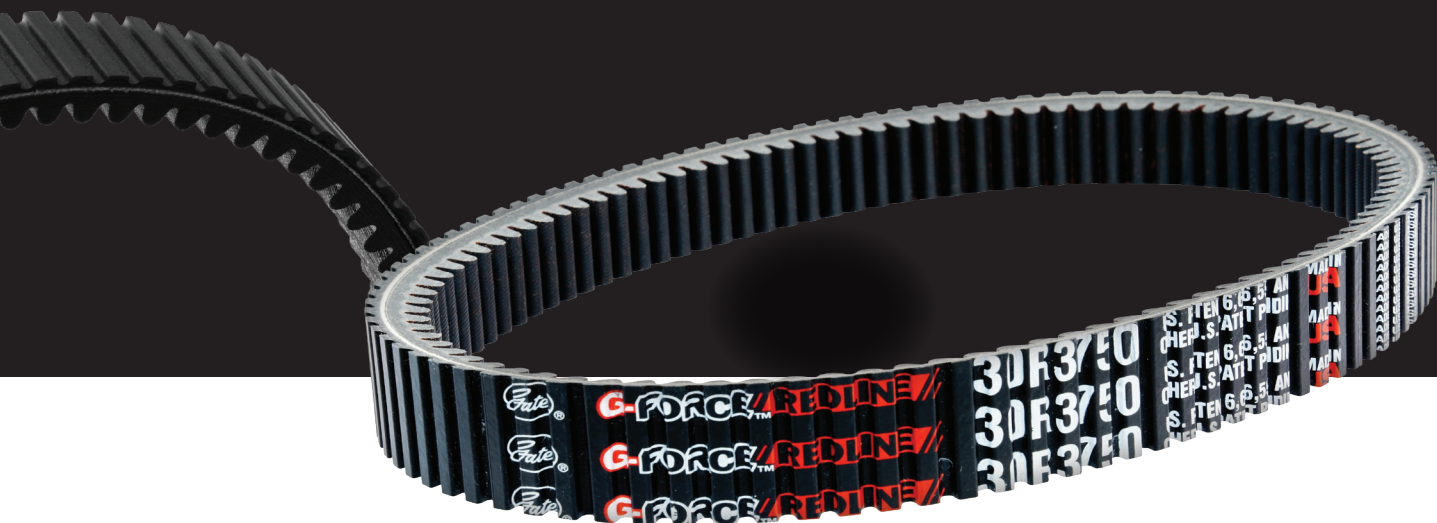
Our newest range falls under one name to fit all models across the 50-850cc power range. G-Force PowerLink belts are built to withstand extreme friction, severe compressive force and the excessive heat that's generated by high acceleration, frequent back-shifting and heavy loads.

- Aramid fiber reinforced rubber compound to better resist wear and ensure smooth sliding in the variator pulleys
- Advanced chemical treatment of the tensile members, to assure improved bonding between cord and rubber and guarantee longer belt life and high shock resistance
- Broad temperature range ensures performance no matter the weather



SCOOTER ENGINE SIZE	G-FORCE™ POWERLINK™
Low-range engine size, stock vehicle (≈50-150cc)	Polyester cord. Single notch design
Low-range engine size, stock vehicle (≈150-399cc)	Aramid Cord. Single notch design
Mid-range engine size, stock vehicle (≈400-850cc)	Aramid Cord. Double notch design





### G-Force RedLine™

Developed from the most advanced materials, extensively lab and field-tested, Gates G-Force RedLine CVT belts are engineered to handle the wildest rides required for the dunes, deserts, mountains, and race-day.

Built to withstand extreme friction, severe compressive force, and excessive heat created from high-acceleration, frequent back-shifting, and heavy loads.

- Delivers 75% greater dynamic axial stiffness on average, up to 50% lower speed losses and better recovery from temperatures up to 170°C without power loss.
- Best within extreme off-road environments: better acceleration, higher top speed, less speed ratio & energy loss
- Greater heat resistance & recovery – even under severe duty cycles
- Extremely fatigue resistant
- Improved durability, crack & wear-resistance

### G-Force WorkHorse™

Our newest Gates G-Force WorkHorse CVT belt, is engineered to handle the toughest tasks and trails.

- Up to 2x the life of the G-Force Belt
- 45% increased heat tolerance
- Power for hauling heavy loads across aggressive terrain
- Improved durability, crack & wear-resistance

### WHAT'S THE RIGHT CVT BELT FOR ME?

UTV/ATV/SNOWMOBILE VEHICLE TYPE	
Low-range engine size, stock vehicle (≈150-399cc)	G-FORCE WORKHORSE™ CVT BELT
Mid-range engine size, stock vehicle (≈400-799cc)	
High-range engine size, stock vehicle (≈800-1100cc)	G-FORCE REDLINE™ CVT BELT G-Force RedLine was specifically designed for these newer vehicles and turbo options
Extremely high-range engine size, stock vehicle (up to 1300cc)	
Extensive aftermarket vehicle/engine modifications/turbo-charging	







# SUPPORT MATERIAL

## ELIMINATE BELT FAILURES, INCREASE BELT LIFE & PERFORMANCE

### Proper Clutching -#1 Cause of Failures

- Verify clutches are properly tuned for vehicle modifications to include, added weight-(cage, accessories, storage boxes), increased tire size/style-(Paddles, Mud Tread)/weight, terrain, and riding style. Any increases in overall weight of vehicle and Tire size beyond original manufactured design will need to be re-clutched.

### Proper Belt Break In

- Always perform proper new belt break-in procedure after installation to seat the belt, allowing extra time when performing heat cycles in very cold conditions.

### Proper Belt Handling

- Never back-bend or crimp a CVT belt; never turn a CVT belt inside out; do not pry on belt during installation. Always store in its original shape.

### Clutch System Inspection and Maintenance

- Inspect primary and secondary clutches for any defects and ensure proper alignment; always prep clutches prior to belt installation and follow proper belt break-in procedure.
- Verify clutch sheaves and belt are clean and free of contaminants; examine rollers, helix and bushings for signs or wear and replace if necessary.
- Always drive in appropriate gear range for terrain and conditions.



**DO NOT  
BACKBEND**



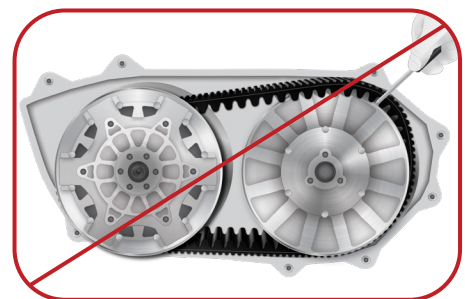
**DO NOT  
CRIMP**



**DO NOT  
FLATTEN BELT**



**DO NOT  
INVERT**



**DO NOT PRY ON**



### IMPORTANT Clutch Tuning

Seek professional help in most cases due to special tools required when working on clutches.

We recommend the customer contact a clutch kit specialty manufacturer or take the vehicle to a power sports shop that does clutch tuning.



# SUPPORT MATERIAL

NAVIGATES



GATES G-FORCE WORKHORSE VIDEO



BELT INSTALLATION VIDEO



BREAK IT IN TECH TIP



GATES G-FORCE REDLINE VIDEO



BELT STORAGE AND HANDLING VIDEO



BELT FAILURE ANALYSIS



DON'T BREAK IT, BREAK IT IN VIDEO



WARRANTY FORM



BROCHURE

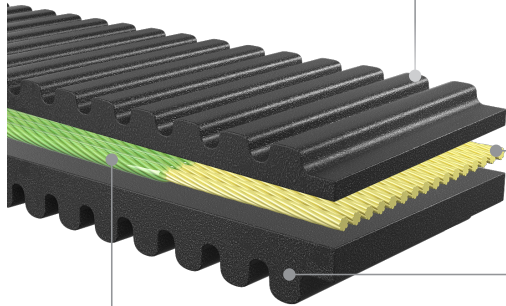


CLEAN THE CLUTCHES VIDEO



## G-Force PowerLink™

### Double Notch Aramid



**Trapezoidal Top Cog with Rounded Bottom Cog**  
Offers exceptional flexibility and efficiency

**High Tensile Aramid Cord**  
Maximizes acceleration and shock load resistance

**EPDM**  
Maximum compression stiffness, longevity and heat resistance

**Specially Formulates Adhesion Gum**  
Extends the service life of belts

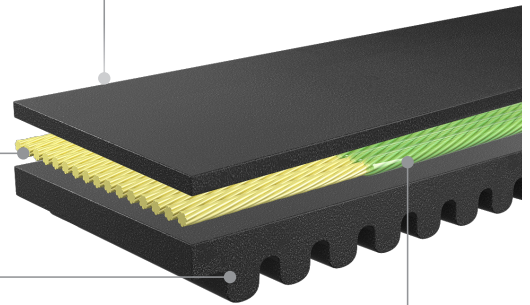
**Trapezoidal CVT Belt with Rounded Bottom Cog**  
Offers exceptional flexibility and efficiency

**High Tensile Aramid Cord**  
Maximizes acceleration and shock load resistance

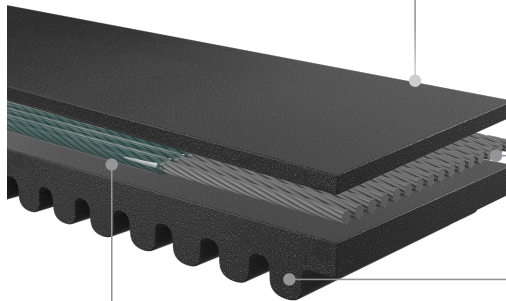
**Rubber Compound**  
Highly elastic and abrasion resistant.  
Superior ozone resistance

**Specially Formulates Adhesion Gum**  
Extends the service life of belts

### Single Notch Aramid



### Single Notch Polyester



**Trapezoidal CVT Belt with Rounded Bottom Cog**  
Offers exceptional flexibility and efficiency

**Tensile Polyester Cord**  
Tailored to small cylinder engine

**Rubber Compound**  
Highly elastic and abrasion resistant.  
Superior ozone resistance

**Specially Formulates Adhesion Gum**  
Extends the service life of belts

## G-Force RedLine™

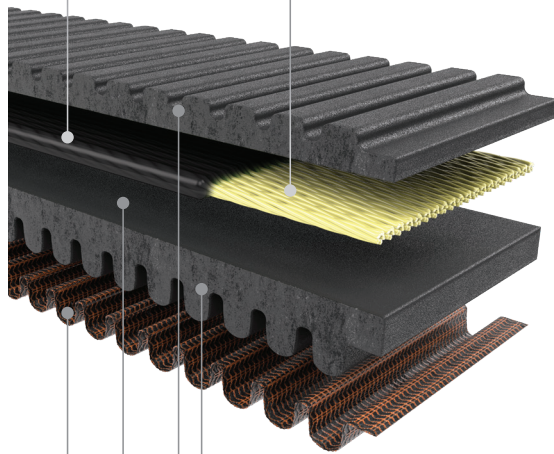
### Specially Formulated Adhesion Gum

Extends belt service life



### High Tensile Aramid Cord

Maximizes acceleration, shock load resistance, and extreme fatigue resistance



### Trapezoidal Top Notch with Rounded Bottom Cog

Delivers exceptional flexibility, heat dissipation & efficiency

### Aramid Fiber-Loaded Ethylene Elastomer

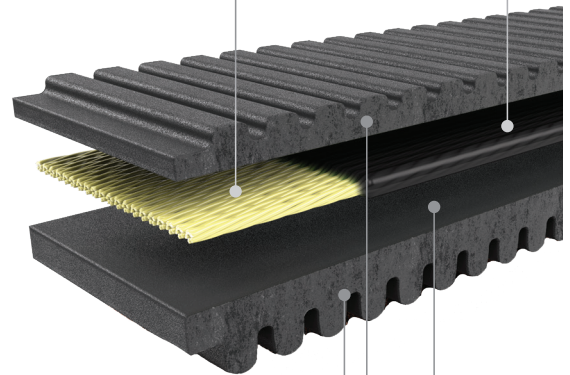
Maximum stiffness & heat resistance for higher loads, higher peak torque, less heat fade, and less speed loss

### Fabric Cog Jacket

Smooth shifting & higher abrasion resistance

**G-FORCE REDLINE™**

## G-Force WorkHorse™



### NEW BELT BREAK IN PROCESS:

Properly break in your new G-Force belt and prevent premature failure.

**GATES.COM/BREAKITIN**

Visit **Navigates.Gates.com**

to find the right G-Force belt for your vehicle.





**DON'T BREAK IT  
BREAK IT IN**

