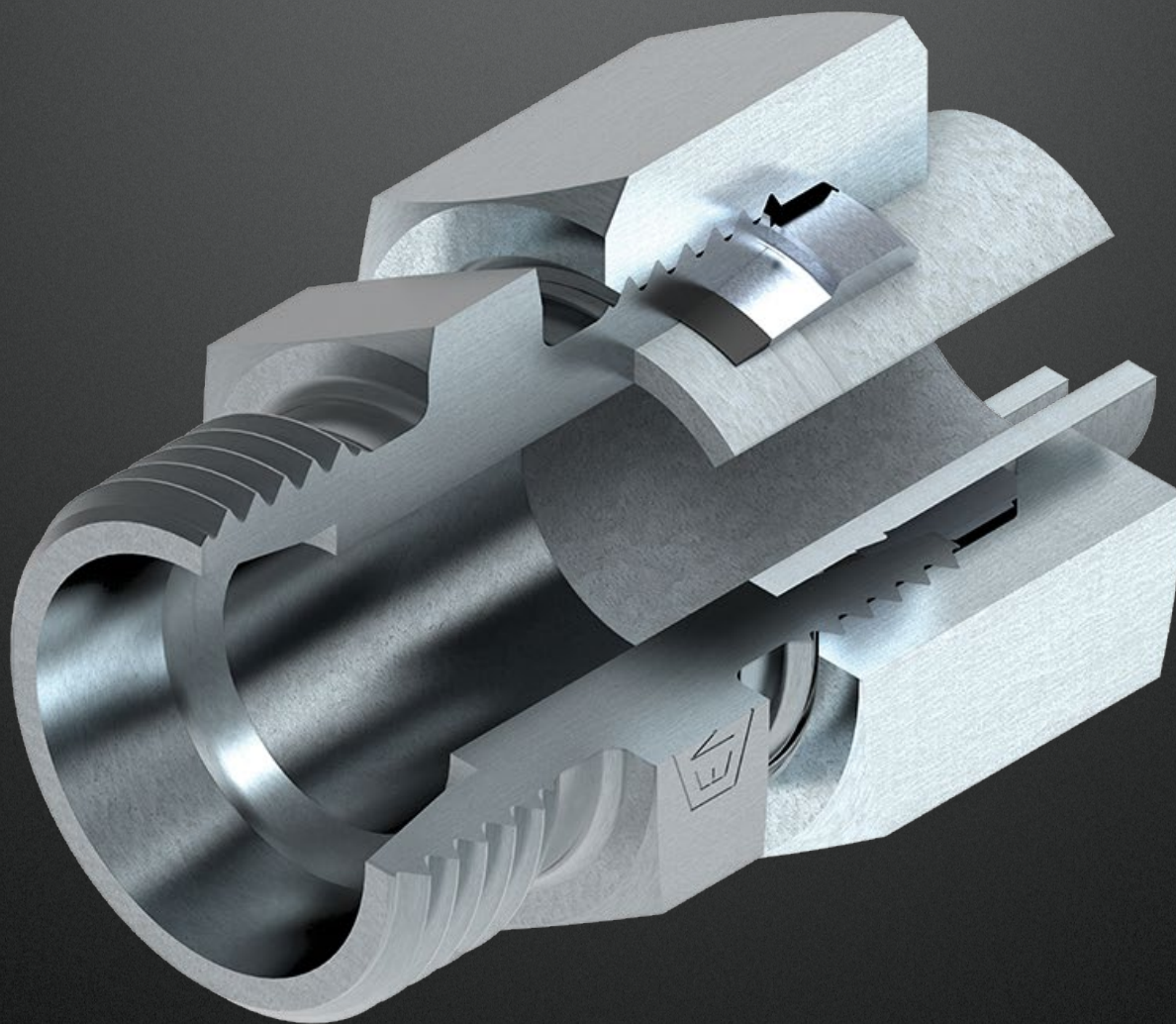




**DRIVEN BY POSSIBILITY™**

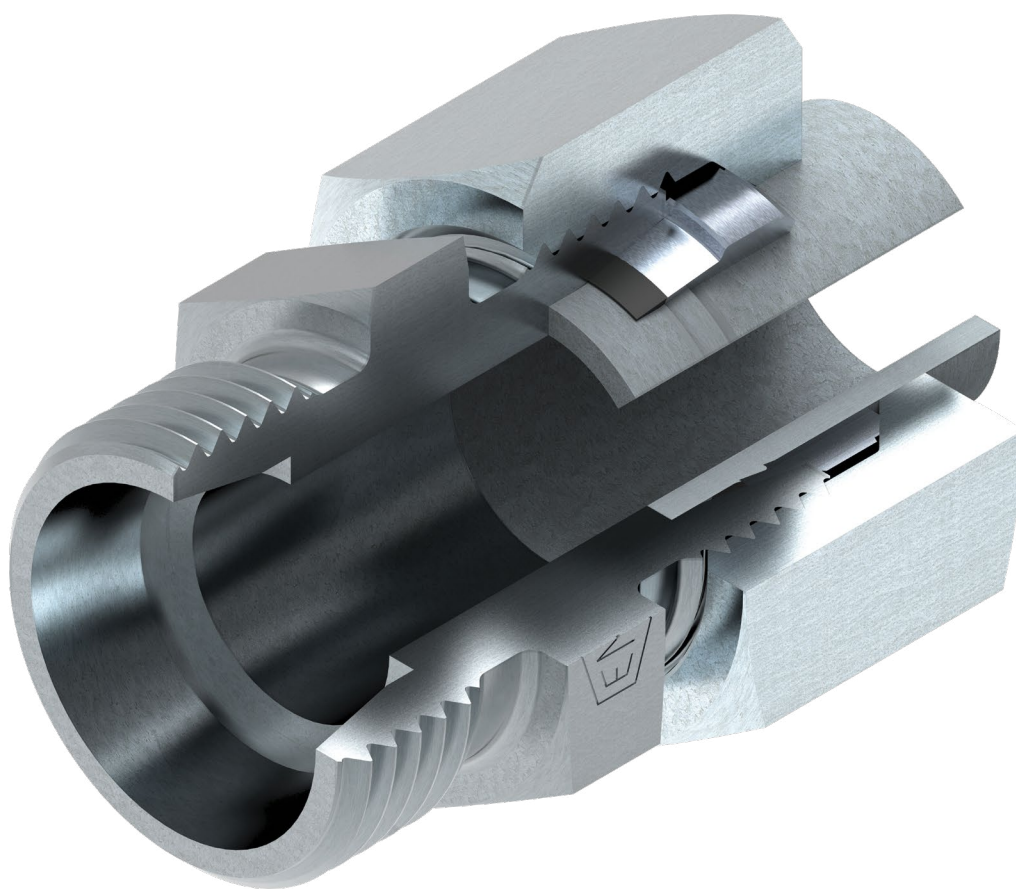


# **GATES DSW-RING**



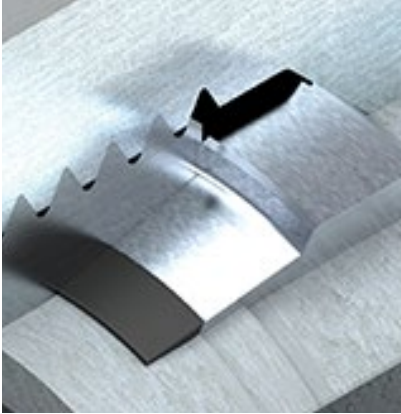


# **ONE COMPONENT TWO CUTTING EDGES THREE ADVANTAGES**



With the double-edged DSW ring and its seal, Gates is taking an innovative step towards maximum operational reliability through high installation safety and excellent sealing properties.

## ADVANTAGE 1



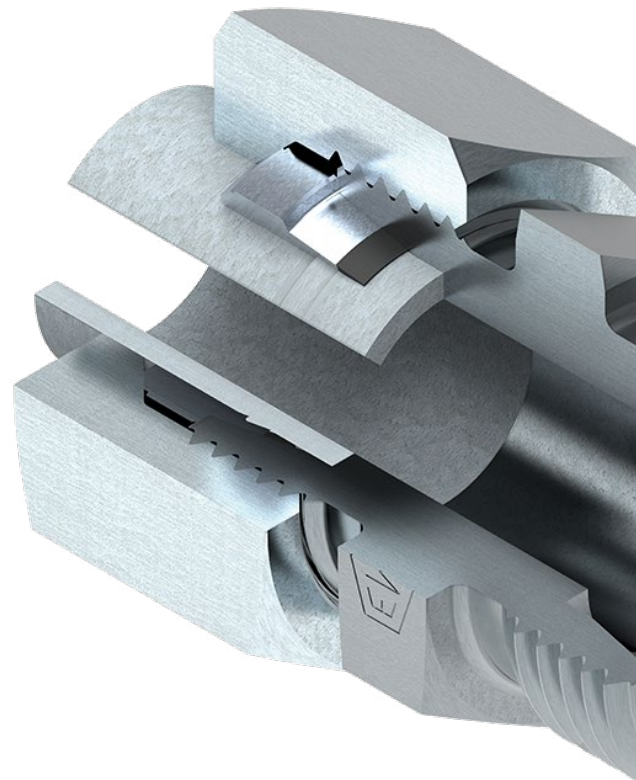
Installation of the DSW ring and the threaded connection is extremely simple and can be mastered safely without extensive training. The high level of assembly safety is achieved due to a “torque stop” feature incorporated in the design. A significant increase in the assembly torque clearly signals that assembly is complete, i.e. the necessary cutting depth has been reached. Process control: confirmation of a successful assembly is easily inspected by loosening the nut and visually checking whether the gap between the DSW ring and the connection piece is closed - and that is it! Over-tightening is impossible due to the 'torque stop' feature. Under-tightening is prevented by the clearly noticeable increase of torque at end of the tightening process informing when to stop tightening.

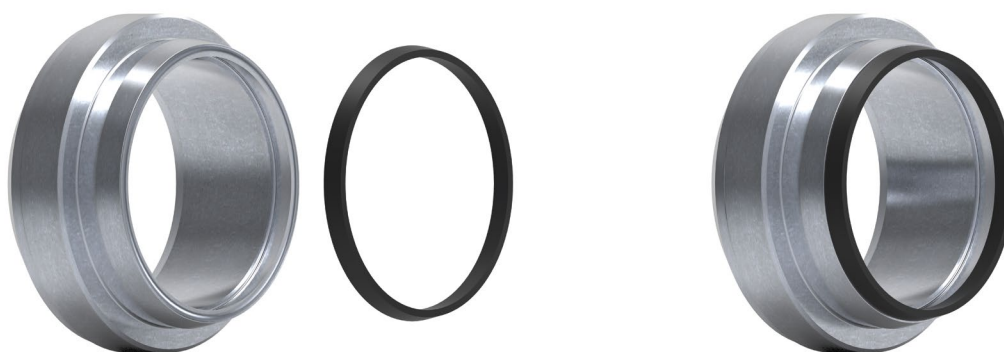
## ADVANTAGE 2

Using a DSW ring in the threaded connection prevents leaks even under pressure surges and vibrations. The primary sealing function is performed by the trapezoidal soft sealing ring. The secondary sealing and retaining function is performed by a special cutting ring with a proven double cutting edge.

## ADVANTAGE 3

The DSW ring with its elastomeric seal achieves a very high level of sealing. As the complete range of threaded fittings can be equipped with the DSW ring, the user has a large number of products at their disposal.





**DSM + TR (Individual components)**

=

**DSW (Assembled part)**

The DSW ring can be used in standardised connector bodies with 24° cone in accordance with ISO 8434-1 or DIN 3861 Form W and the union nut DIN 3870 Form A.

SERIES	L										S									
Tube OD (mm)	6	8	10	12	15	18	22	28	35	42	6	8	10	12	14	16	20	25	30	38
Steel	500			400			250				800			630			400			
Stainless Steel	315						160				630					400			315	

The DSW ring can be assembled by hand as well as by machine. It can be assembled directly to the final connector body in the installation; alternatively, a hardened pre-assembly connecting piece (VM) can be used to pre-assemble the tube. The threaded connections can be loosened and refitted at any time.

This all means the highest manufacturing quality and precision.

**SEE [GATES.COM](https://www.gates.com) FOR ADDITIONAL PRODUCTS FROM GATES**